

2.3 fb<sup>-1</sup> (13 TeV)

Events

**CMS Preliminary**

VBF-tagged

• Data

Z( $\rightarrow \nu\nu$ )+jets

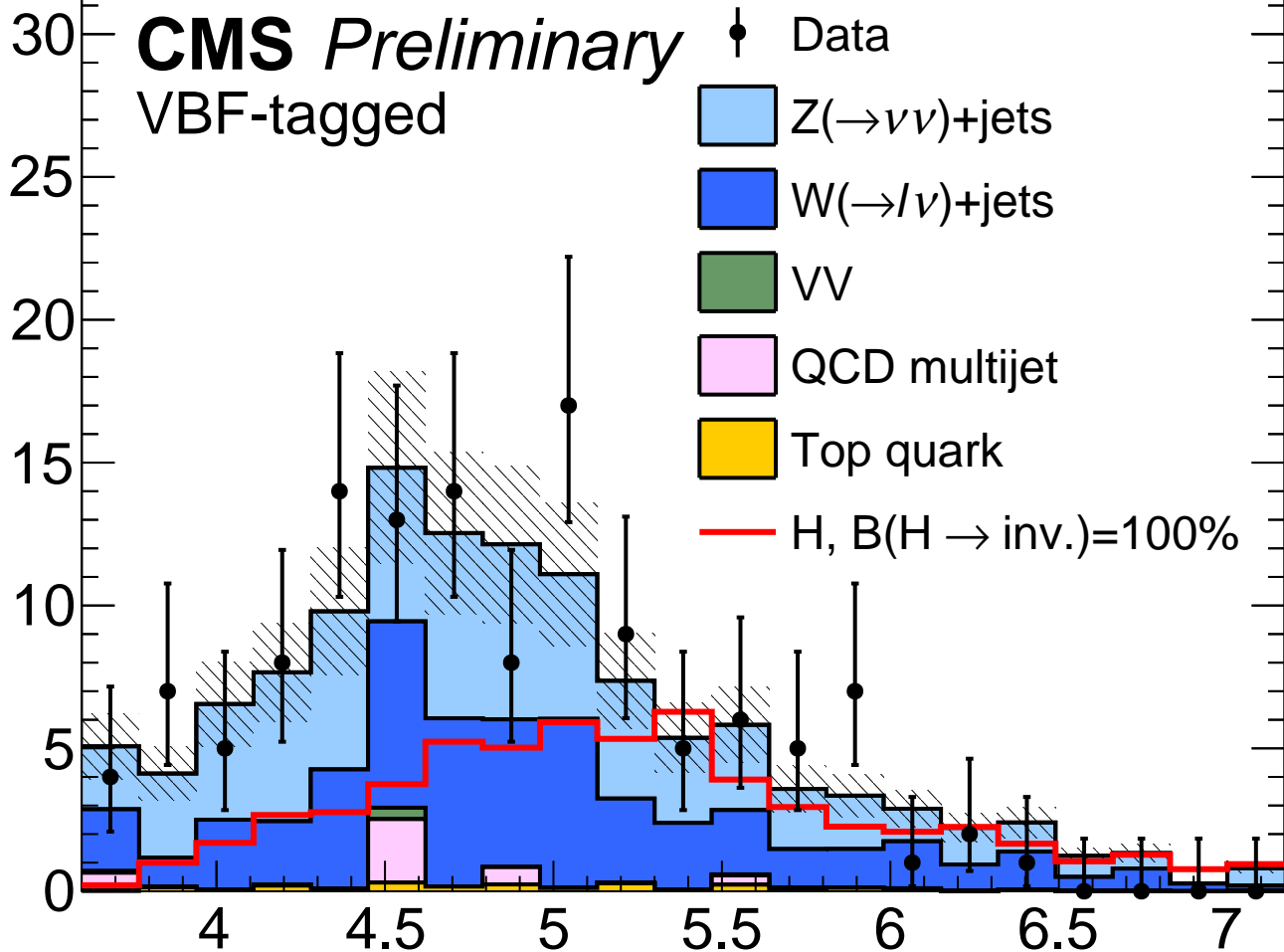
W( $\rightarrow l\nu$ )+jets

VV

QCD multijet

Top quark

— H, B(H  $\rightarrow$  inv.)=100%



$\Delta\eta(j_1, j_2)$