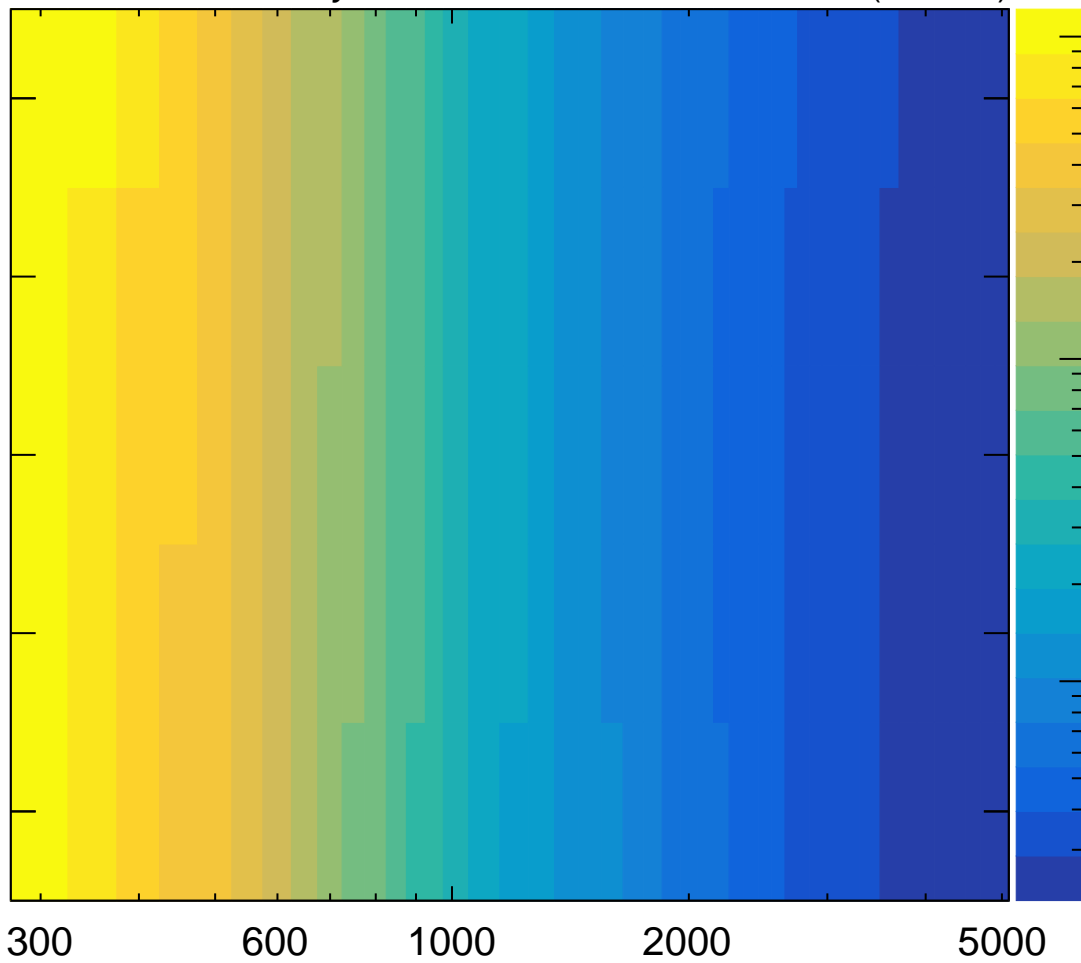


**CMS***Preliminary*138 fb<sup>-1</sup> (13 TeV)Relative width  $\Gamma_H/m_H$ 10%  
5%  
2%  
1%  
0.1% $m_H$  [GeV]95% CL limit on  $\sigma(H \rightarrow WW \rightarrow 2l2\nu)$  [pb]10<sup>-1</sup>  
10<sup>-2</sup>  
10<sup>-3</sup>