

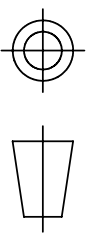
ISO 2768-mK-E

ISO 13715 ^{+0.3}/_{-0.3}

Tolerances geometriques, lineaires et angulaires
Aretes de forme non definie

TOLERANCES GENERALES MOYENNE

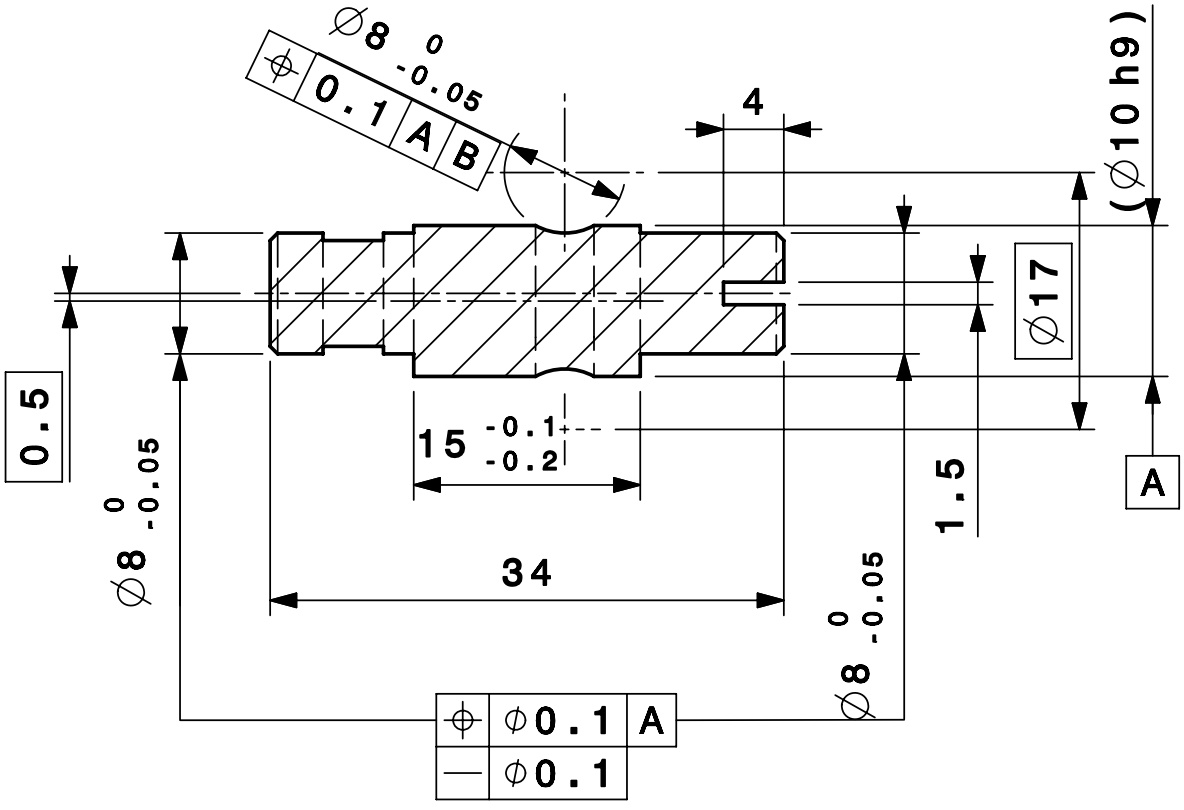
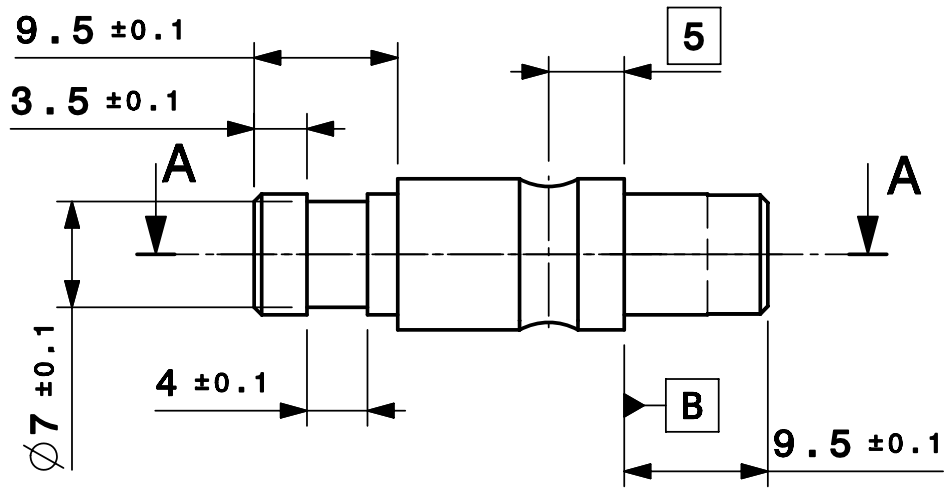
DESSIN, RUGOSITE, TOLERANCES SELON NORMES ISO
DRAWING, RUGOSITY, TOLERANCES ACCORDING TO ISO STANDARDS



PROJECTION

ORGANISATION EUROPEENNE POUR LA RECHERCHE NUCLEAIRE
EUROPEAN ORGANIZATION FOR NUCLEAR RESEARCH GENEVE

Ce dessin ne peut être utilisé à des fins commerciales sans autorisation écrite
This drawing may not be used for commercial purposes without written authorisation



Ra1.6

| | | | | |
|--------|-------------------|----------------|-------------|----------------|
| 1 | Rond acier D=10h9 | 1 | SteelE295 | 44.40.10 |
| QUANT. | DESCRIPTION | POS | MAT. | REF. CERN |
| | ENS/ASS | CTF BIMTV 0058 | S.ENS/S.ASS | CTF BIMTV 0092 |

| | | | | | | |
|--|--|--|-------------------------|------------|------------------|------------|
| CTF BEAM INSTRUMENTATION MONITOR TV | | | ECHELLE SCALE 2:1 | DES/DRA. | N. MERMILLOD-BLA | 2007-08-23 |
| OPTICAL PILLAR ADJUSTMENT TABLE ECCENTRIC TABLE DE REGLAGE PILIER OPTIQUE EXCENTRIQUE | | | | CONTROLLED | N. CHRITIN | 2007-08-29 |
| | | | | RELEASED | T. LEFEVRE | 2007-08-30 |
| | | | | APPROVED | | |
| | | | CTF\BIMTV0\CTFBIMTV0093 | | | |
| | | | REPLACE/REPLACES | | | |

| | | | | | | |
|------|------------------|-------------|-----|--------------|------|------|
| CERN | RELEASED BY | FOR | GAC | CTFBIMTV0093 | SIZE | IND. |
| | PROJECT ENGINEER | INFORMATION | - | | 4 | |