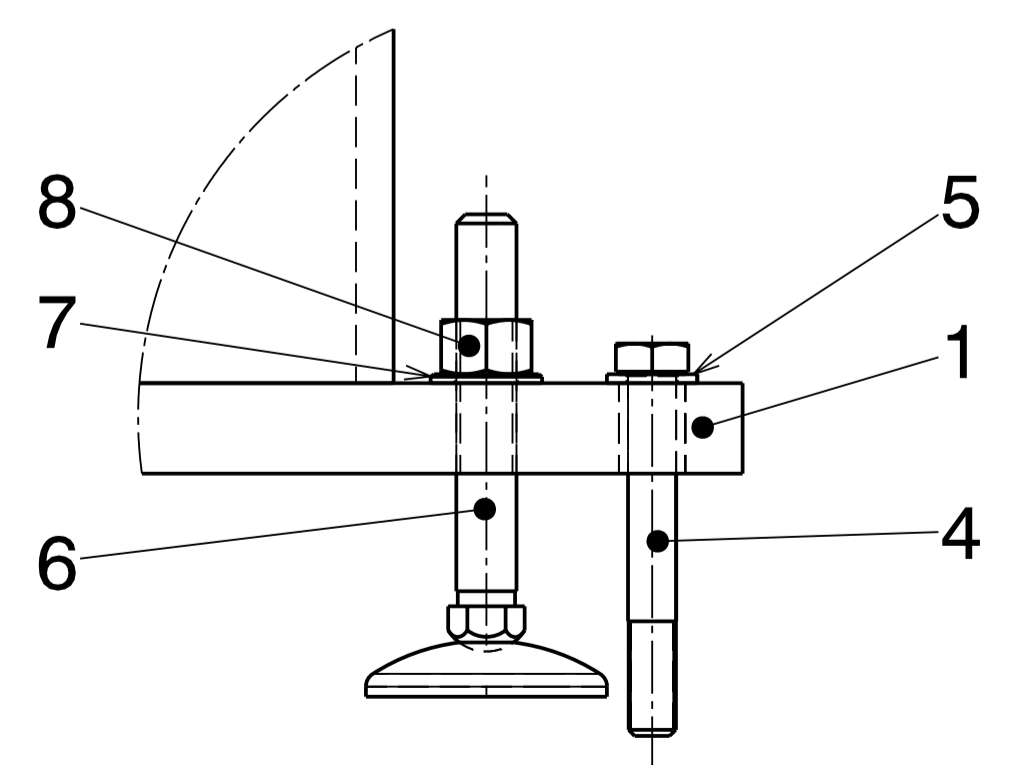


Detail A
Scale : 2:5



2	HEXAGONAL NUT M16	9	STEEL		47.41.65
	ECROU HEXAGONAL M16		ACIER		160.9
3	THIN NUT M20	8	STEEL	BOSSARD BN630	
	ECROU FIN M20		ACIER	SUPPLIED BY NORELEM	
3	PLAIN WASHER M20	7	STEEL	BOSSARD BN715	
	RONDELLE PLATE M20		ACIER		
3	ADJUSTING FOOT	6	STAINLESS STEEL	NORELEM SAS : M20, L=125mm 27828.201252	
	PIED REGLABLE		INOX	NORELEM SAS : forme A, Ø=80mm 27817-10802	
7	PLAIN WASHER M16	5	STEEL	BOSSARD BN715	
	RONDELLE PLATE M16		ACIER		
5	HEXAGON SCREW M16x120	4	STEEL	BOSSARD BN 57	
	VIS A TETE HEXAGONALE M16x120		ACIER		
2	SPACER	3		EPA.7ME.HSE.2859.3	
	ENTRETOISE				
1	DANFYSIC DIPOLE	2		SPS.EA.SPEC 74-10	
	DIPOLE DANFYSIC				
1	BENDING ASSEMBLY - COLUMN L= 810 MM	1		CTFMBHZ_0097	
	ENSEMBLE DIPOLE - COLONNE H= 810 MM				
QUANT.	DESCRIPTION	POS	MAT.	OBSERVATIONS	REF.CERN
ENS/ASS			S.ENS/S.ASS		
CTF3 MAGNET BENDING HORIZONTAL			ECHELLE	DES/DRA.	ACROTECNA 2007-07-25
CTF3 MAGNET BENDING			SCALE	CONTROLLED	
BHB DIPOLE			1:5	RELEASED	
CAMBRAGE PAR AIMANT CTF3				APPROVED	
DIPOLE BHB				CTF\MBHZ_0\CTFMBHZ_0088	
				REPLACE/REPLACES	
NON VALABLE POUR EXECUTION			OAC	CTFMBHZ_0088	SIZE IND.
NOT VALID FOR EXECUTION			-	1	

DESIGNED BY: TOLERANCES ACCORDING TO ISO STANDARDS
 DRAWING ORGANIZATION: EUROPEAN ORGANIZATION FOR NUCLEAR RESEARCH
 THIS DRAWING IS NOT TO BE USED FOR COMMERCIAL PURPOSES WITHOUT WRITTEN AUTHORIZATION