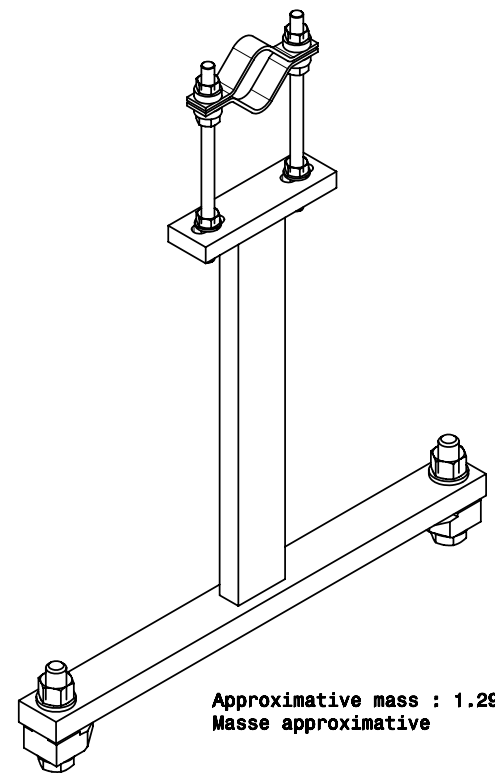
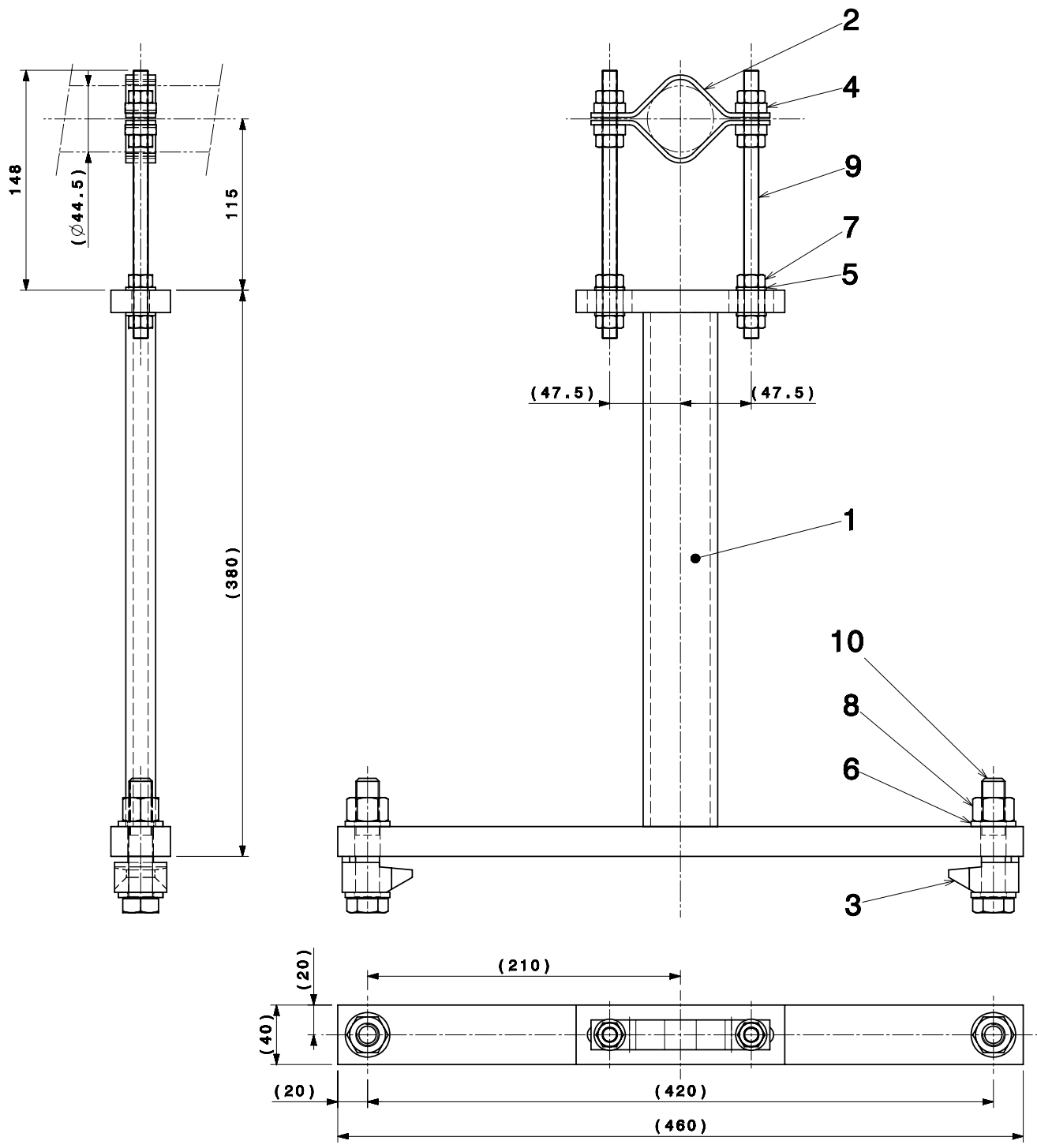


DESIN, KONSTRUKCIJA, IZUMIŠTAVANJE
 DRAMAŽING, INŽENJERING, TOLERANCIJE
 AKORDIRANJE TO ILO 67/AVANDE

KONSTRUKCIJA IZUMIŠTAVANJE
 DRAMAŽING, INŽENJERING, TOLERANCIJE
 AKORDIRANJE TO ILO 67/AVANDE

CONSULTATION ENGINEERING FOR
 EUROPEAN ORGANIZATION FOR NUCLEAR RESEARCH
 CERN
 THIS DRAWING MAY NOT BE USED FOR COMMERCIAL PURPOSES WITHOUT WRITTEN AUTHORIZATION



Approximative mass : 1.294 kg
Masse approximative

QUANT.	DESCRIPTION	POS	MAT.	OBSERVATIONS	REF. CERN	
2	SCREW H M16x80	10	STEEL 8.8		47.62.81	
	VIS H M16x80		ACIER 8.8		521.0	
	THREADED ROD M10x180		STEEL		47.36.77	
2	TIGE FILETEE M10x180	9	ACIER		100.5	
2	HEXAGONAL NUT M16	8	STEEL		47.41.85	
	ECROU HEXAGONAL M16		ACIER		160.9	
8	HEXAGONAL NUT M10	7	STAIN. STEEL M-70		47.43.77	
	ECROU H M10				100.6	
4	WASHER M16	8	Steel 8.8		47.78.13	
	RONDILLE M16		Acier 8.8		016.6	
4	WASHER M10	6	ST. STEEL 18.12		47.78.15	
	RONDILLE M10		INOX 18.12		010.4	
4	SPHERICAL WASHER M10	4	STEEL		47.78.12	
	RONDILLE SPHERIQUE M10		ACIER		810.2	
2	FLAT TOP FIXING	3	STEEL	LINDAPTER TYPE "B" - B16M		
	CRAPAUD		ACIER			
2	VACUUM CHAMBER 44.5 - V-SHAPED			CTFVCTUB0088		
	CHAMBRE A VIDE - VE	2				
1	CTF3 VACUUM CHAMBER - SUPPORT	1		CTFVCTUB0220 or CTFVCTUB0249		
	CHAMBRE A VIDE CTF3 - SUPPORT					
ENS/ASS		CTFLSPB / DR_0001	S.ENS/S.ASS			
CTF3 TUBULAR VACUUM CHAMBER		ECHELLE		DES/DRA.	ACROTECNA	2007-10-03
VACUUM CHAMBER SUPPORT ON GIRDER		SCALE		CONTROLLED	B. FAVRAT	2007-10-03
ASSEMBLY		1:2		RELEASED	R. RUBER	2007-10-05
SUPPORT SUR POUTRE CHAMBRE A VIDE				APPROVED	-	-
ENSEMBLE				CTF\VTUBO\CTFVCTUB0221		
				REPLACE/REPLACES		
RELEASED BY		FOR	DAC	SIZE		
PROJECT ENGINEER		EXECUTION	-	IND.		
CTFVCTUB0221				2		