

Supplementary material for LHCb-PAPER-2018-025

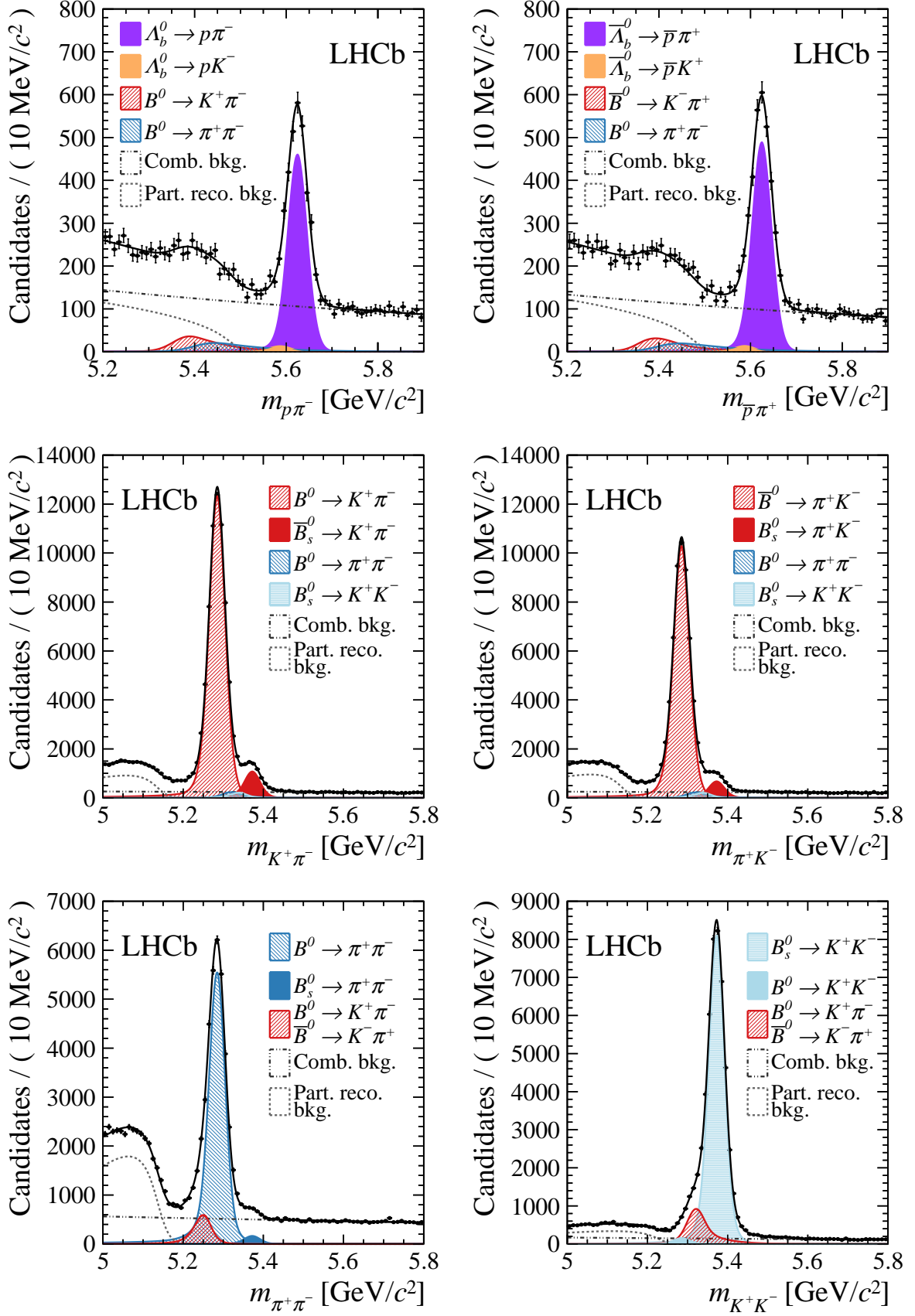


Figure 1: Invariant-mass distributions: (top left) $m_{p\pi^-}$, (top right) $m_{\bar{p}\pi^+}$, (middle left) $m_{K^+\pi^-}$, (middle right) $m_{\pi^+K^-}$, (bottom left) $m_{\pi^+\pi^-}$ and (bottom right) $m_{K^+K^-}$ for the S_{pK^-} selection. The results of the fits are superimposed.

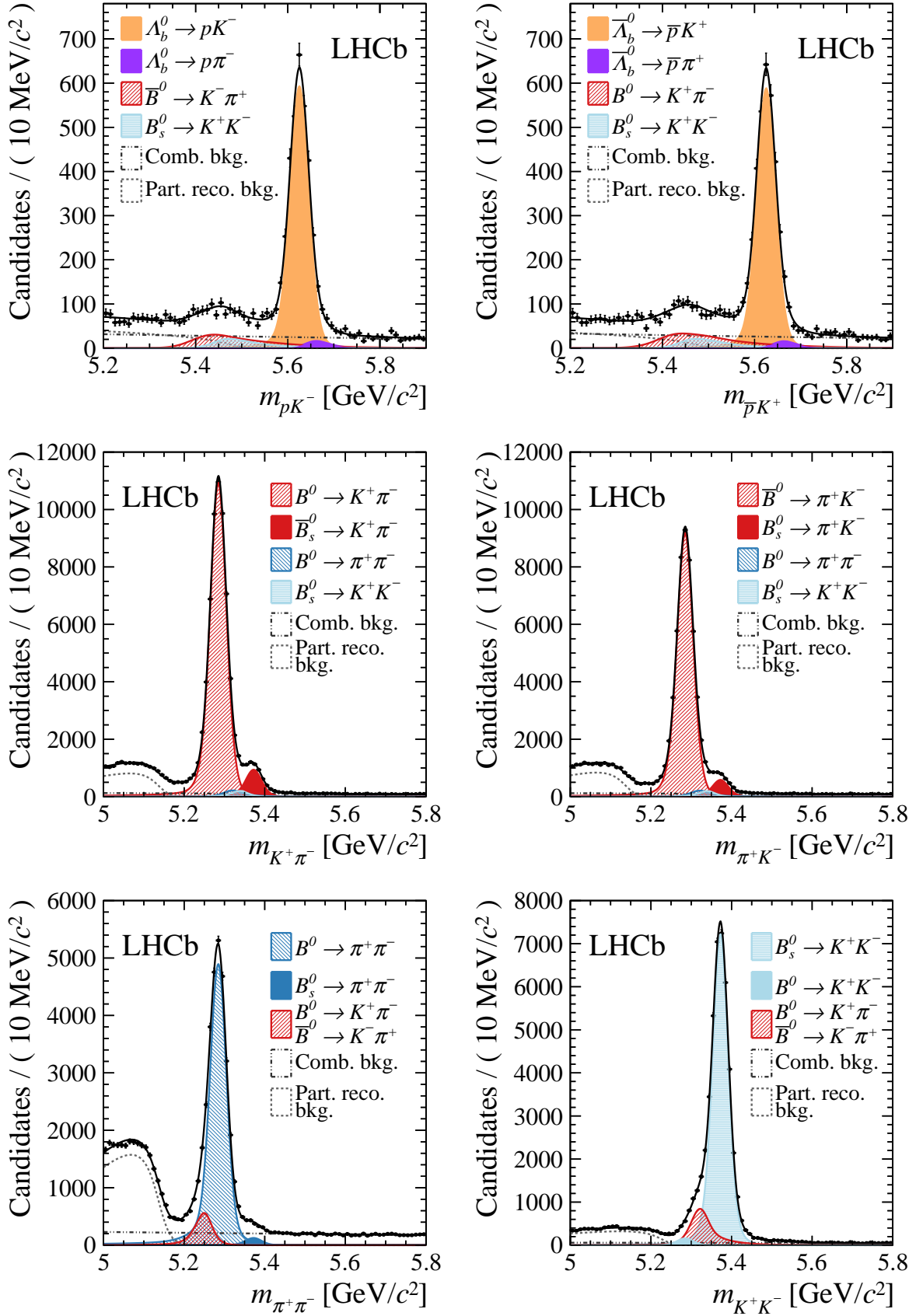


Figure 2: Invariant-mass distributions: (top left) m_{pK^-} , (top right) $m_{\bar{p}K^+}$, (middle left) $m_{K^+\pi^-}$, (middle right) $m_{\pi^+K^-}$, (bottom left) $m_{\pi^+\pi^-}$ and (bottom right) $m_{K^+K^-}$ for the $S_{p\pi^-}$ selection. The results of the fits are superimposed.