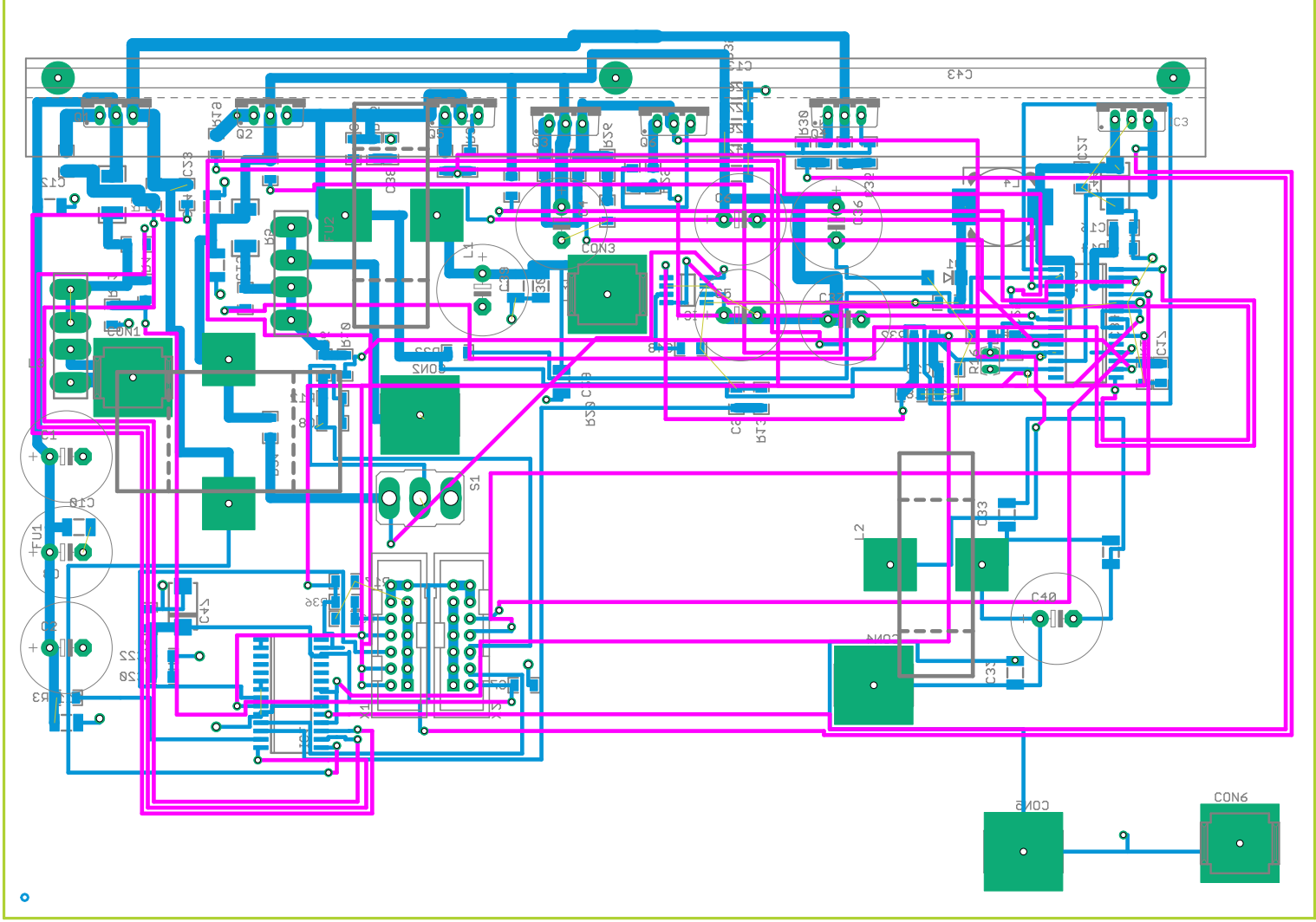
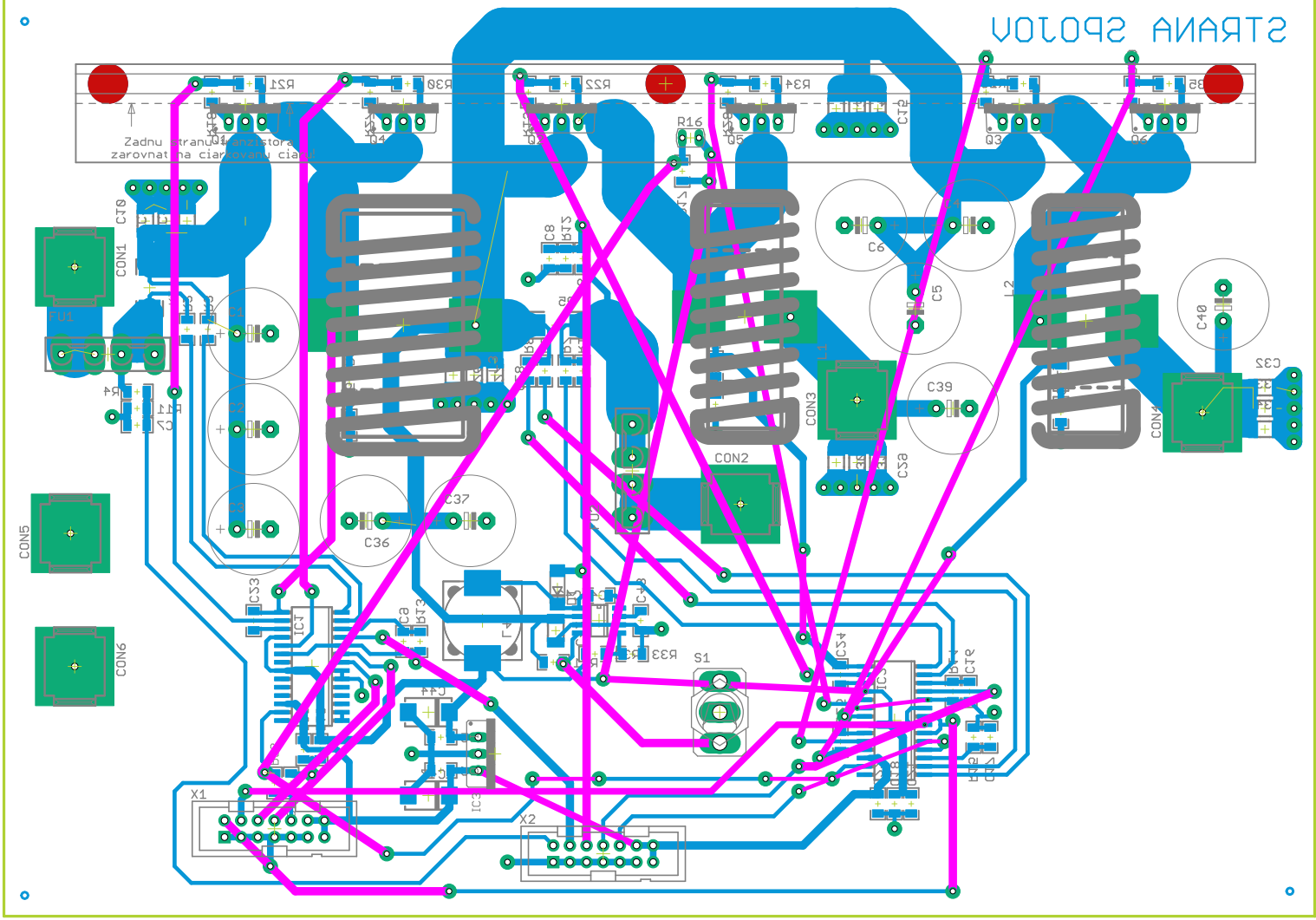


BOTTOM

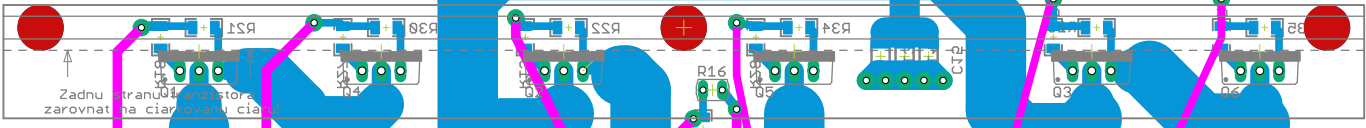
BOTTOM



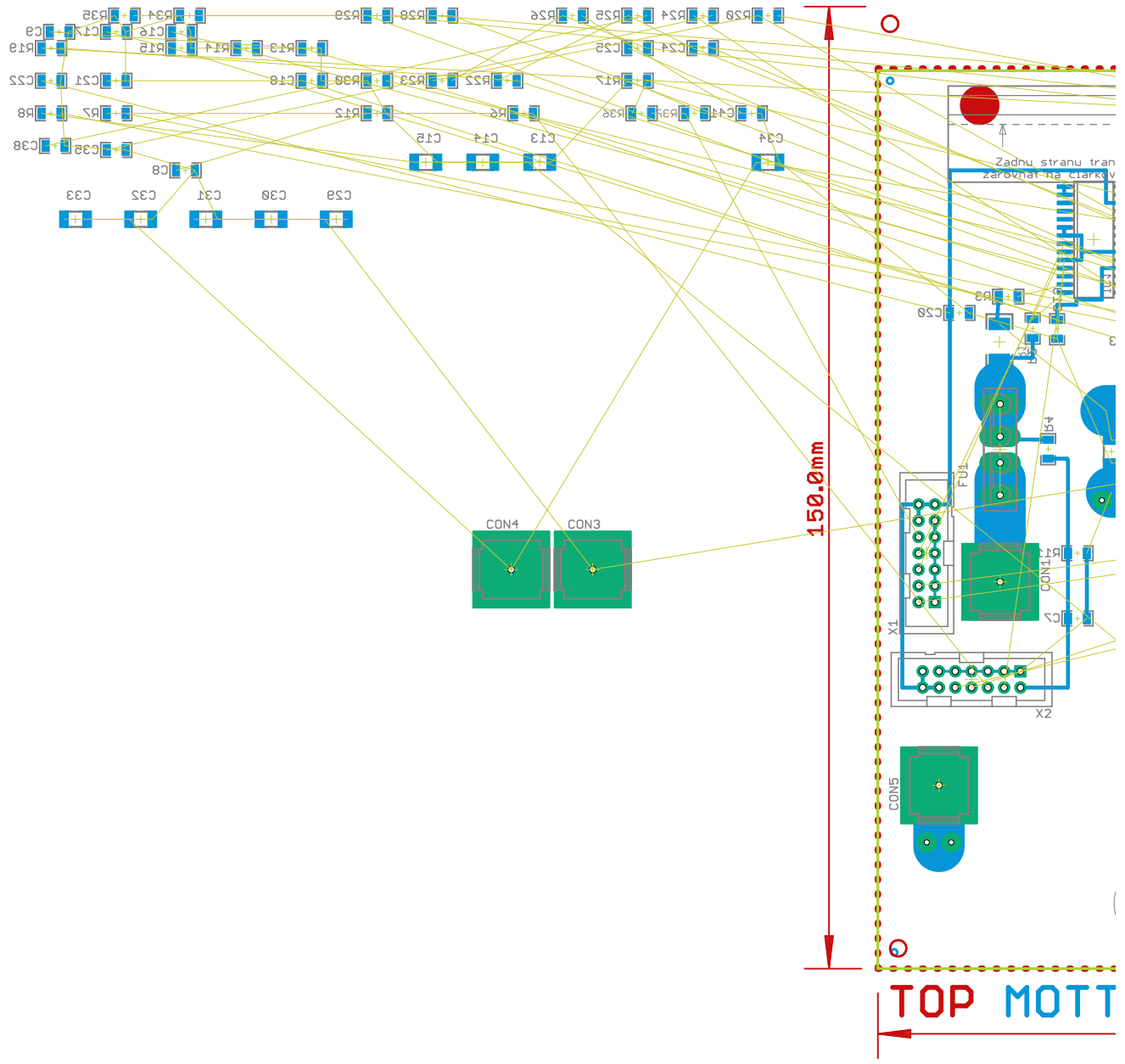
BOTTOM

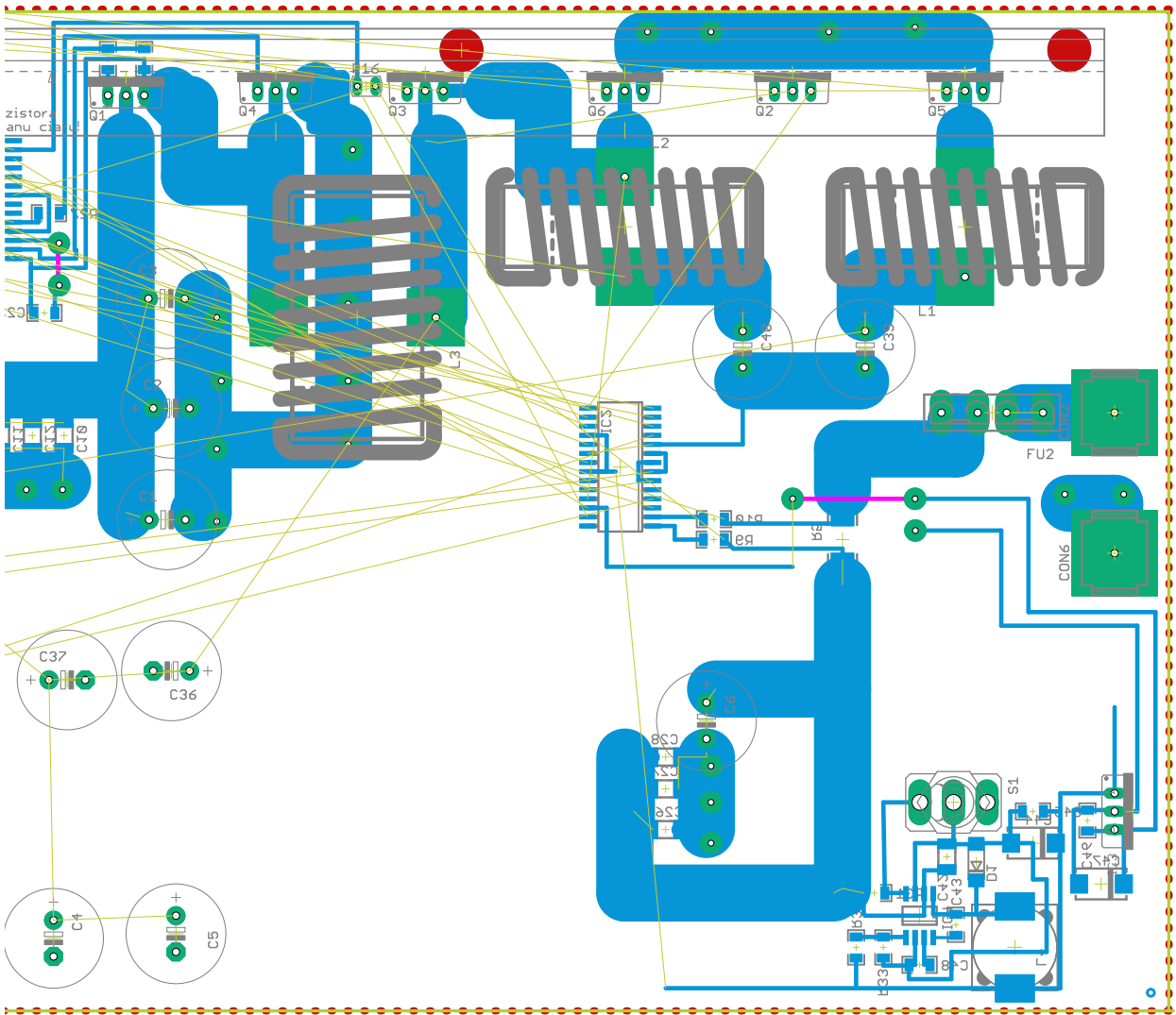


STRANA SPOLNOV



Zadnu stranu kompostora zarovnat na ciaru vlny cia

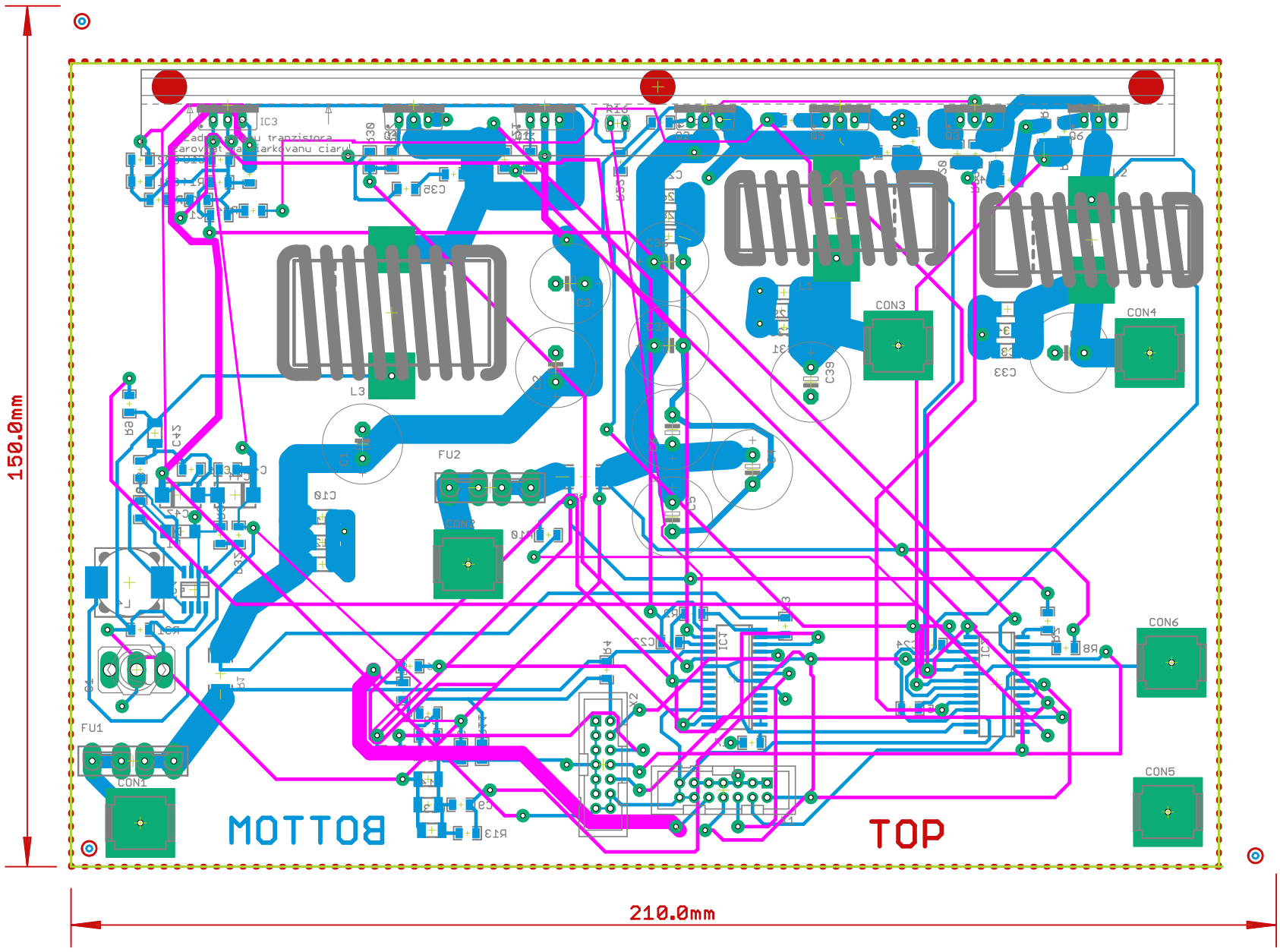




B0

210.0mm



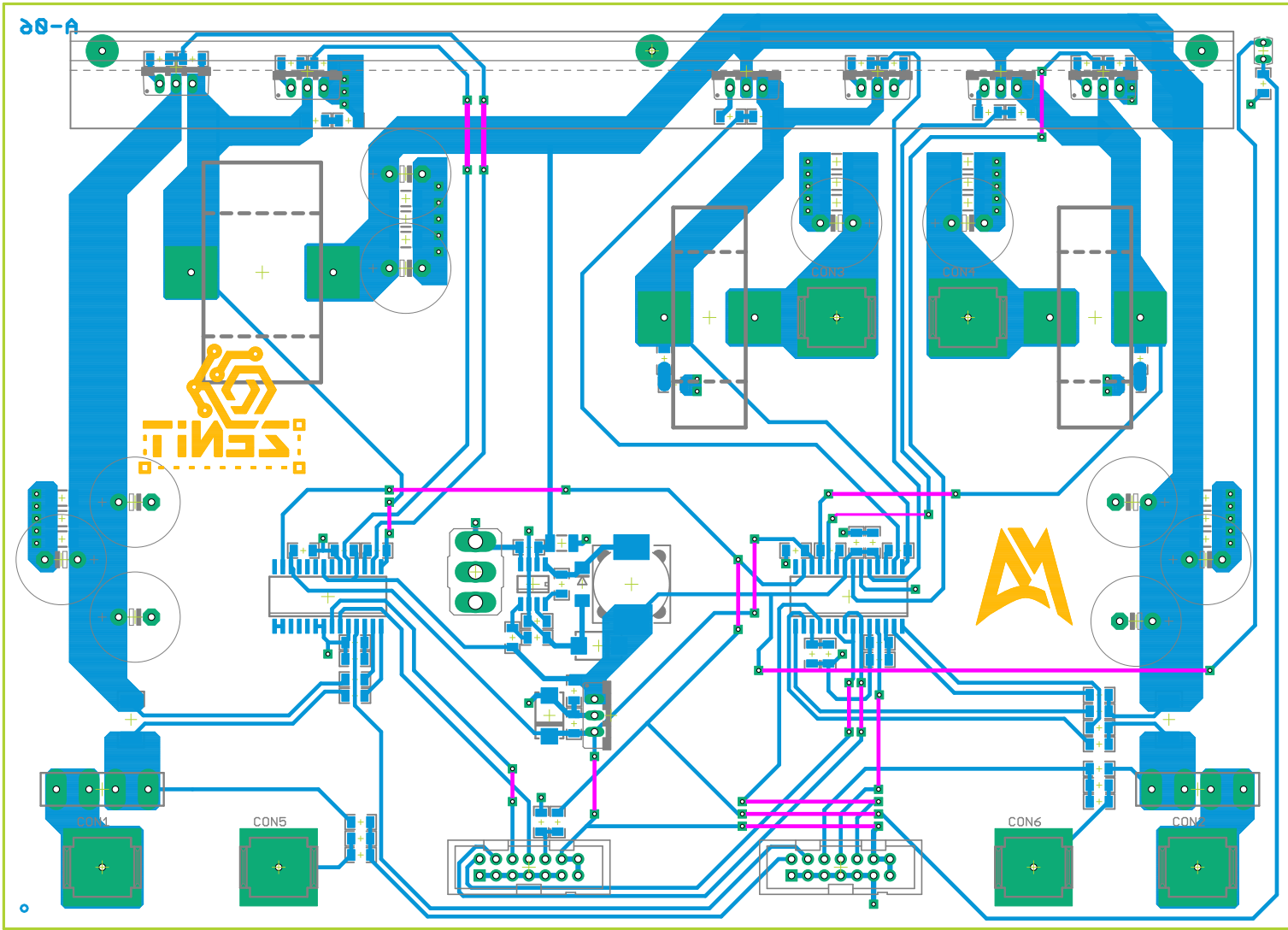


150.0mm

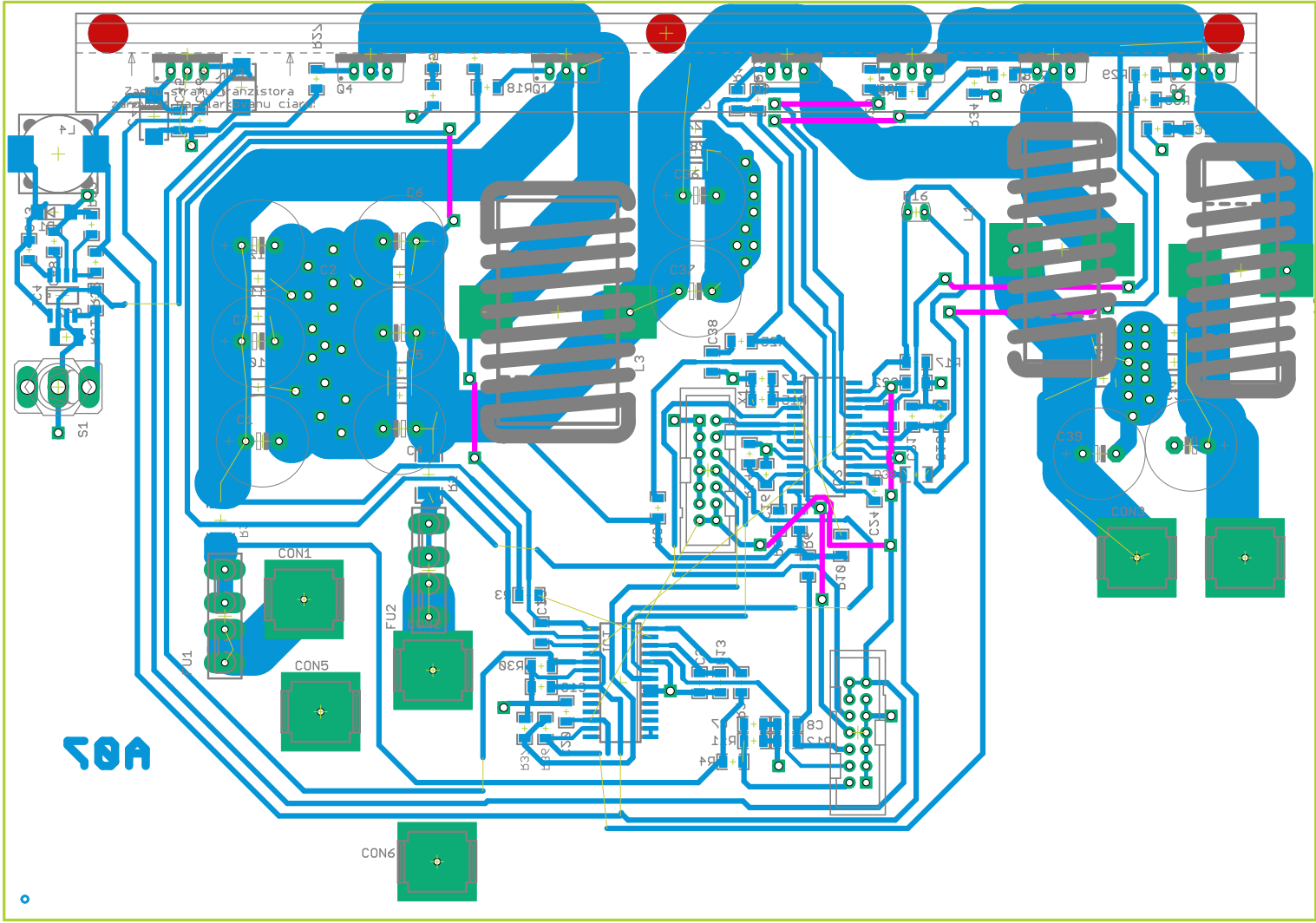
210.0mm

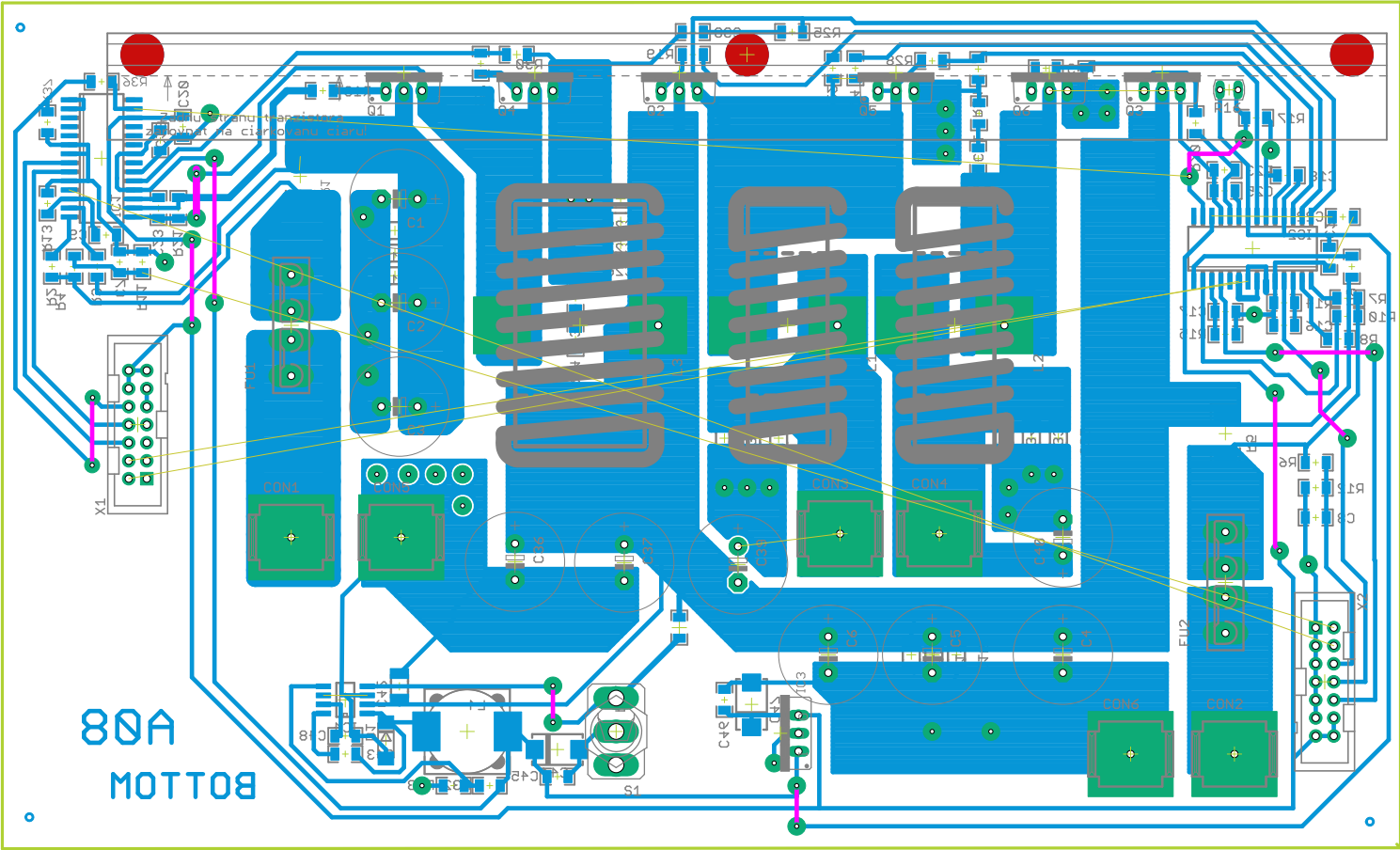
BOTTOM

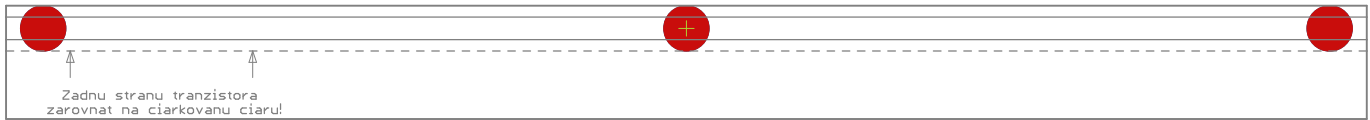
TOP



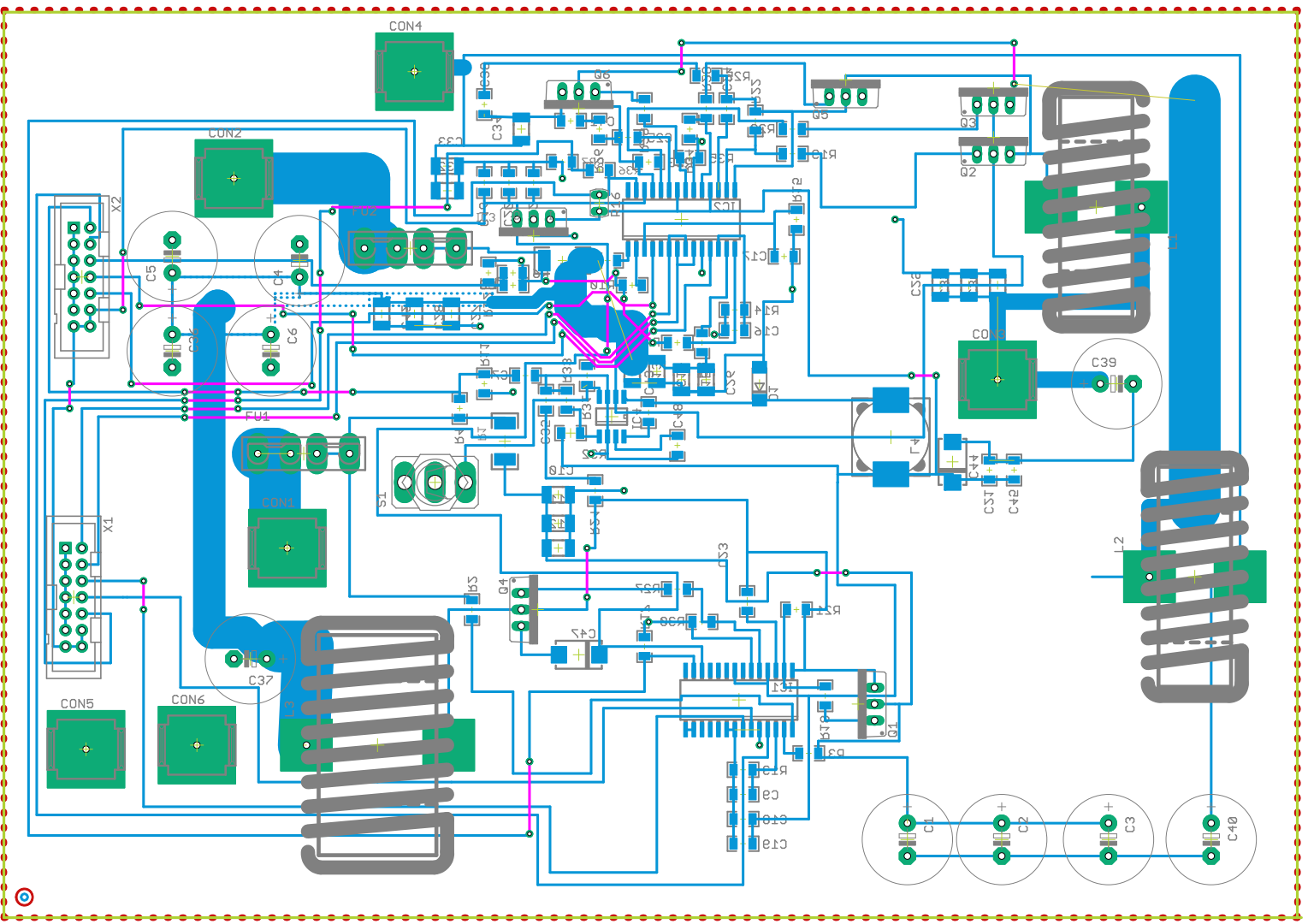
BOTTOM





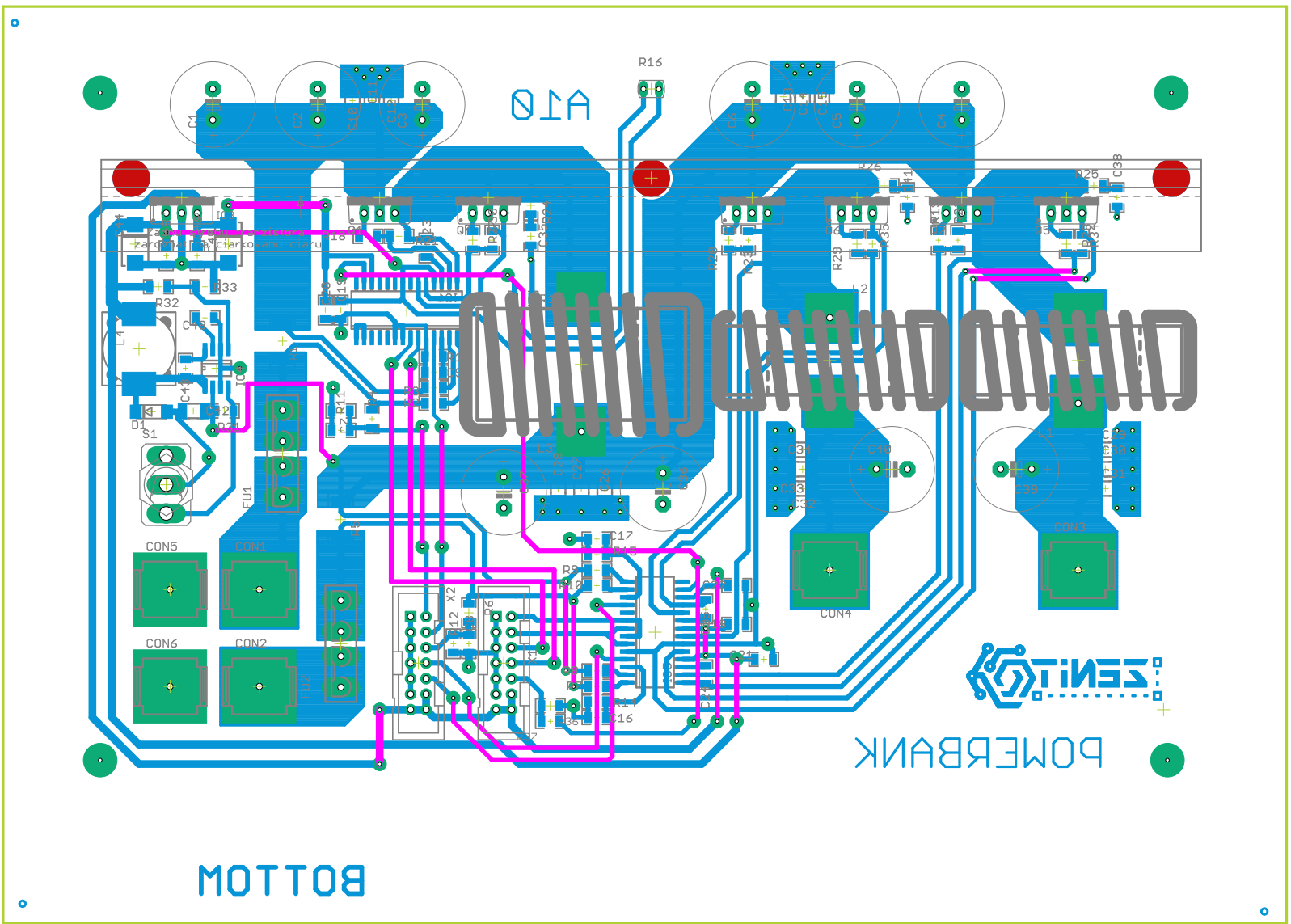


150.0mm



TOP BOTTOM

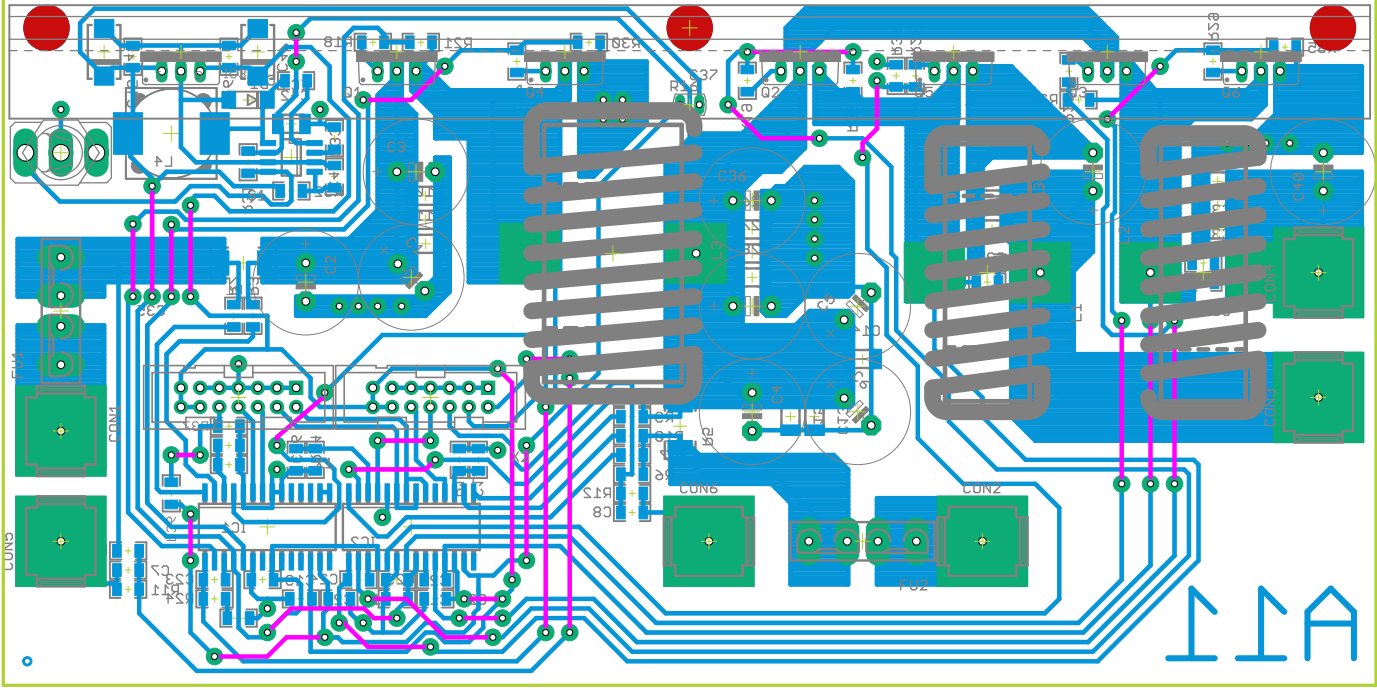
210.0mm



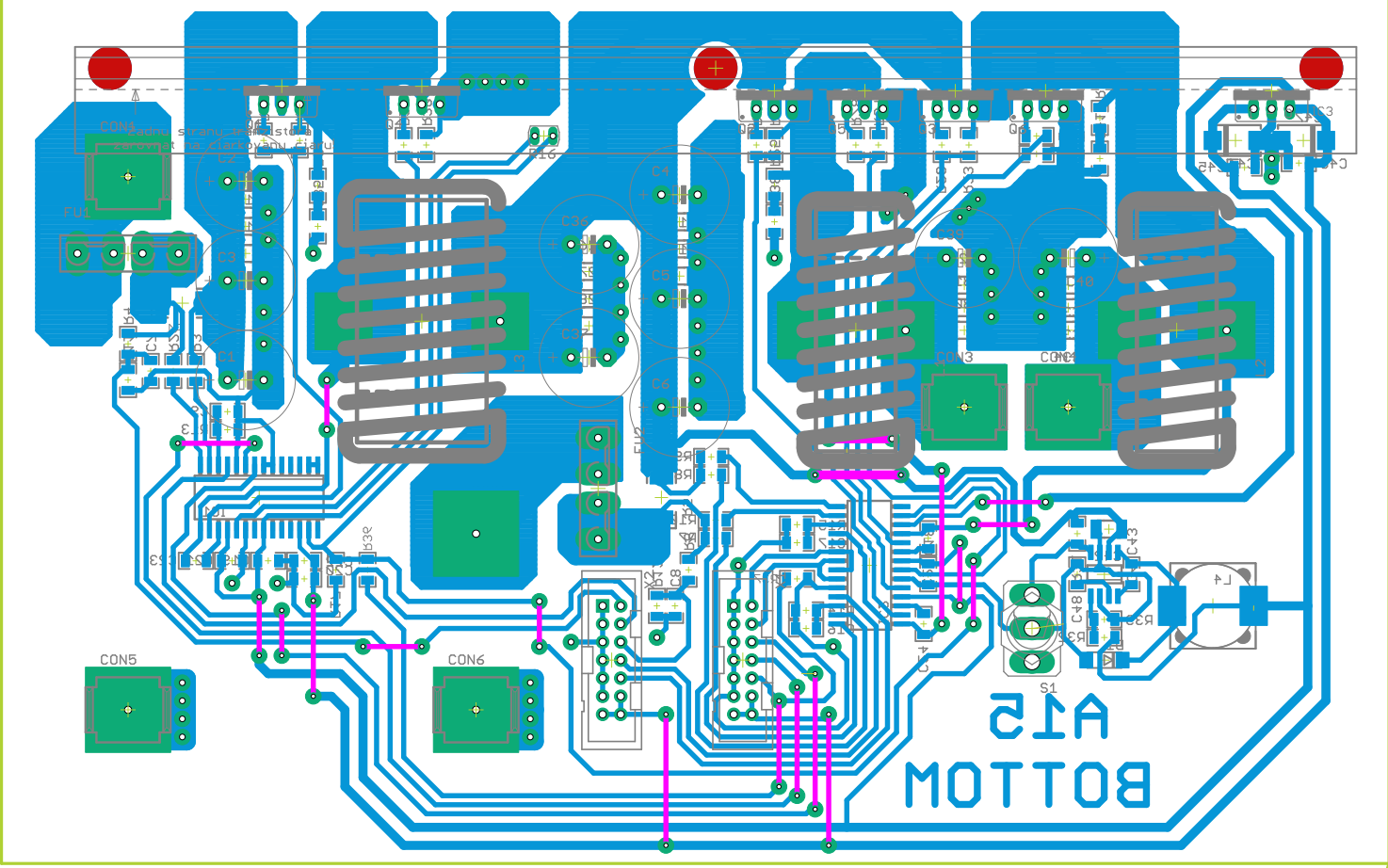
BOTTOM

POWERBANK

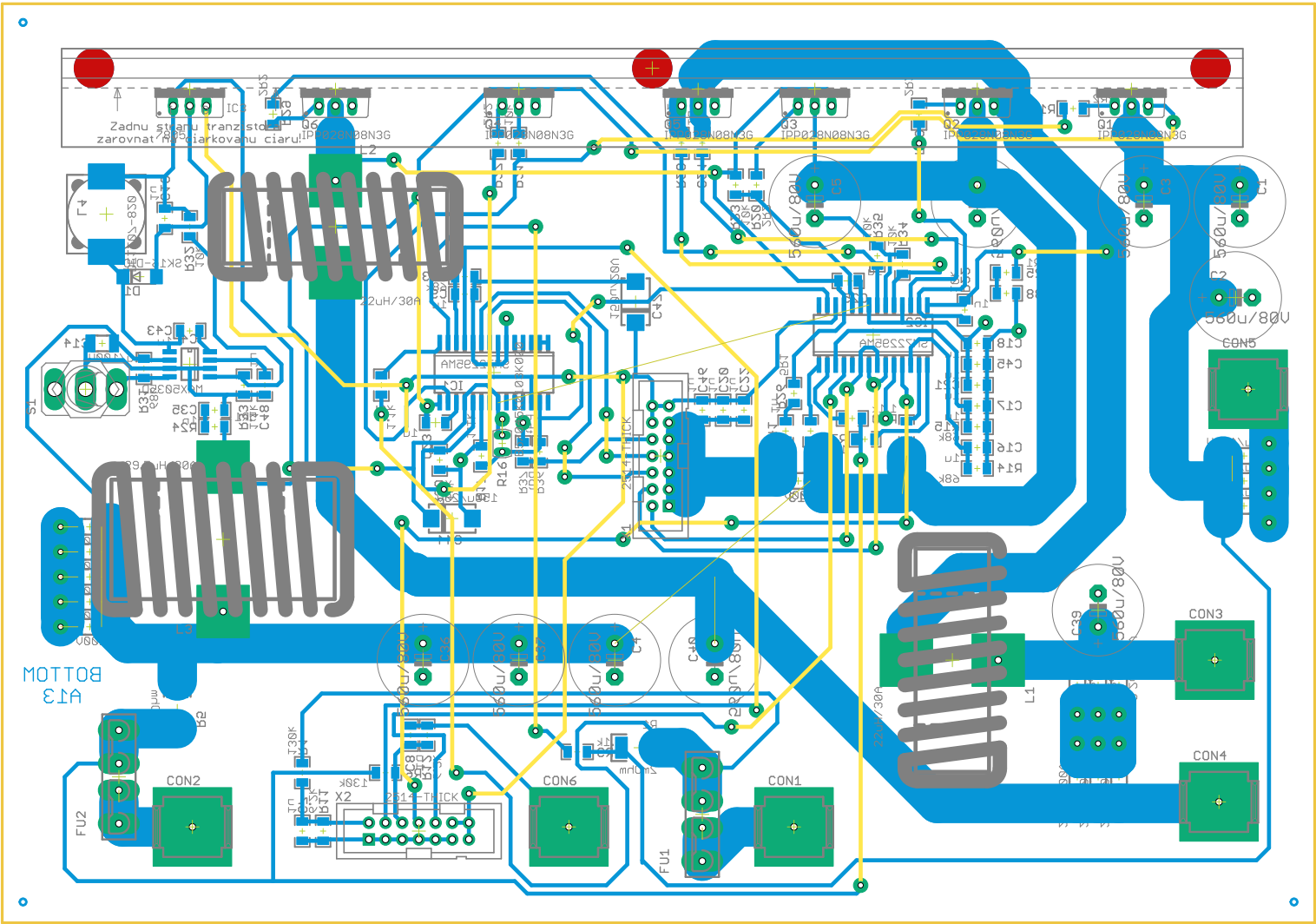




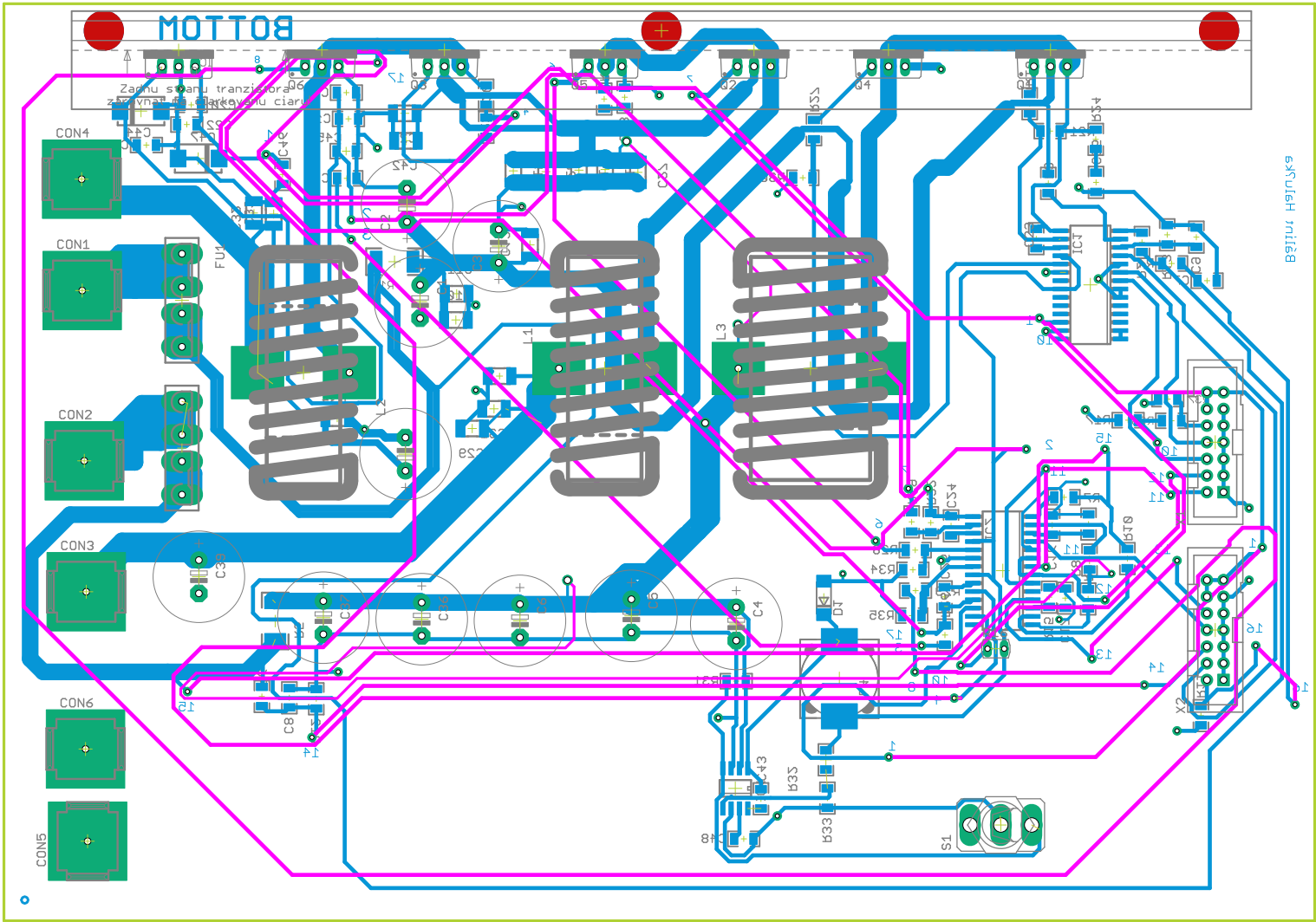
BOTTOM



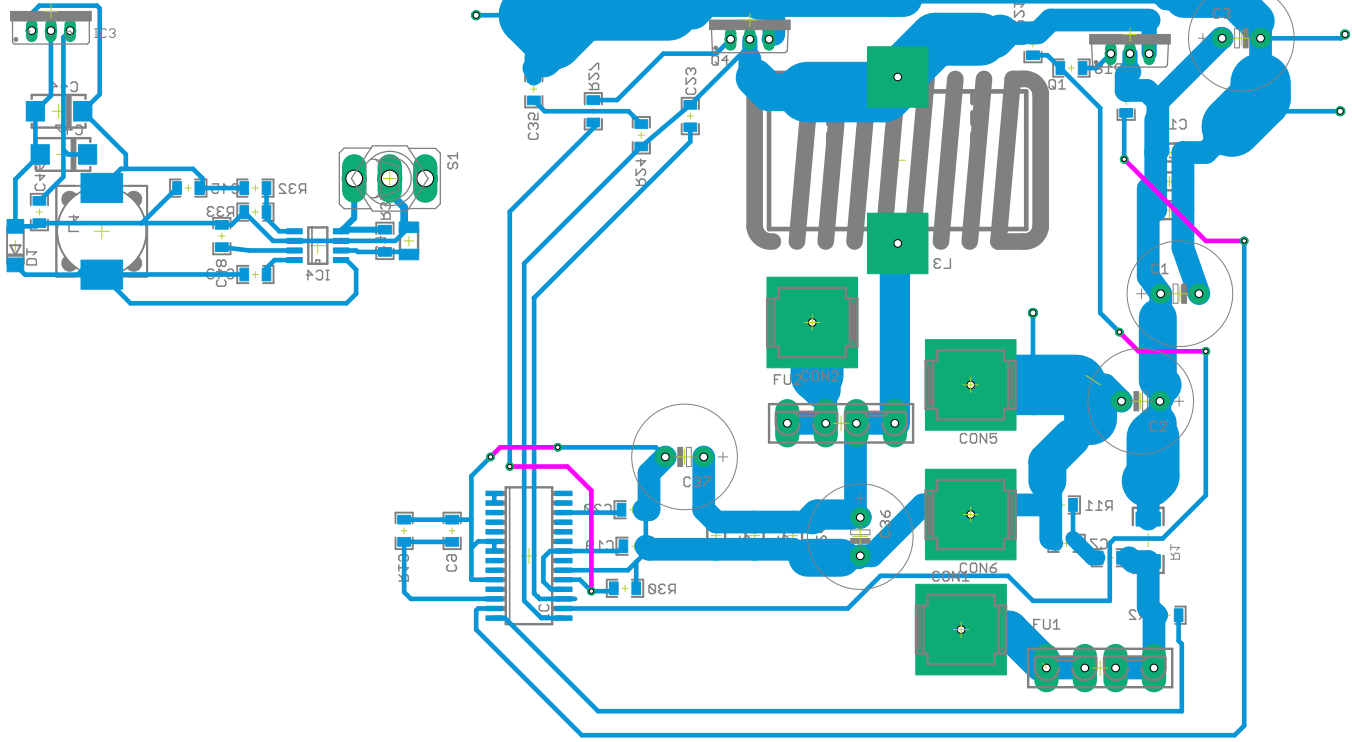
BOTTOM

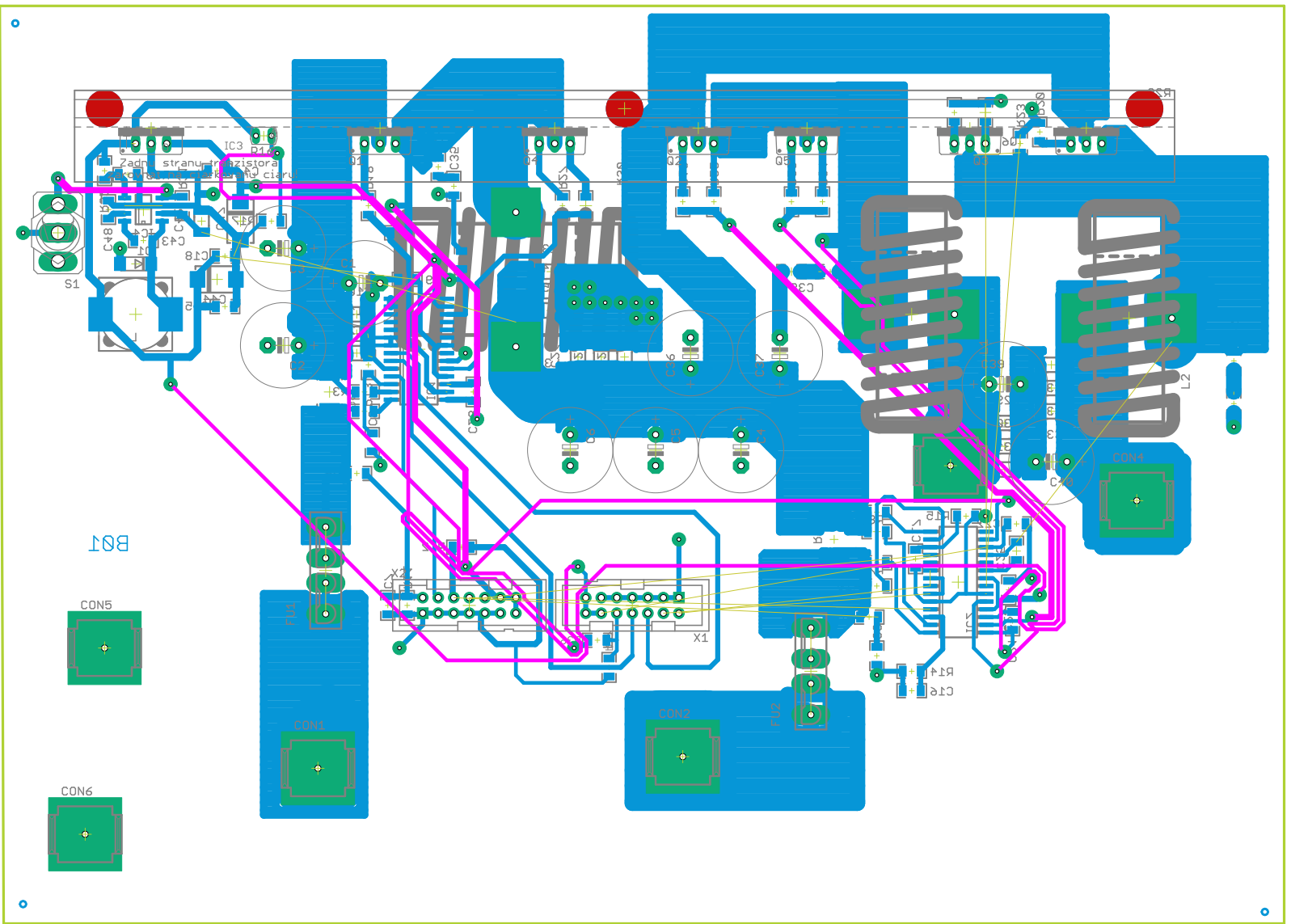


BOTTOM

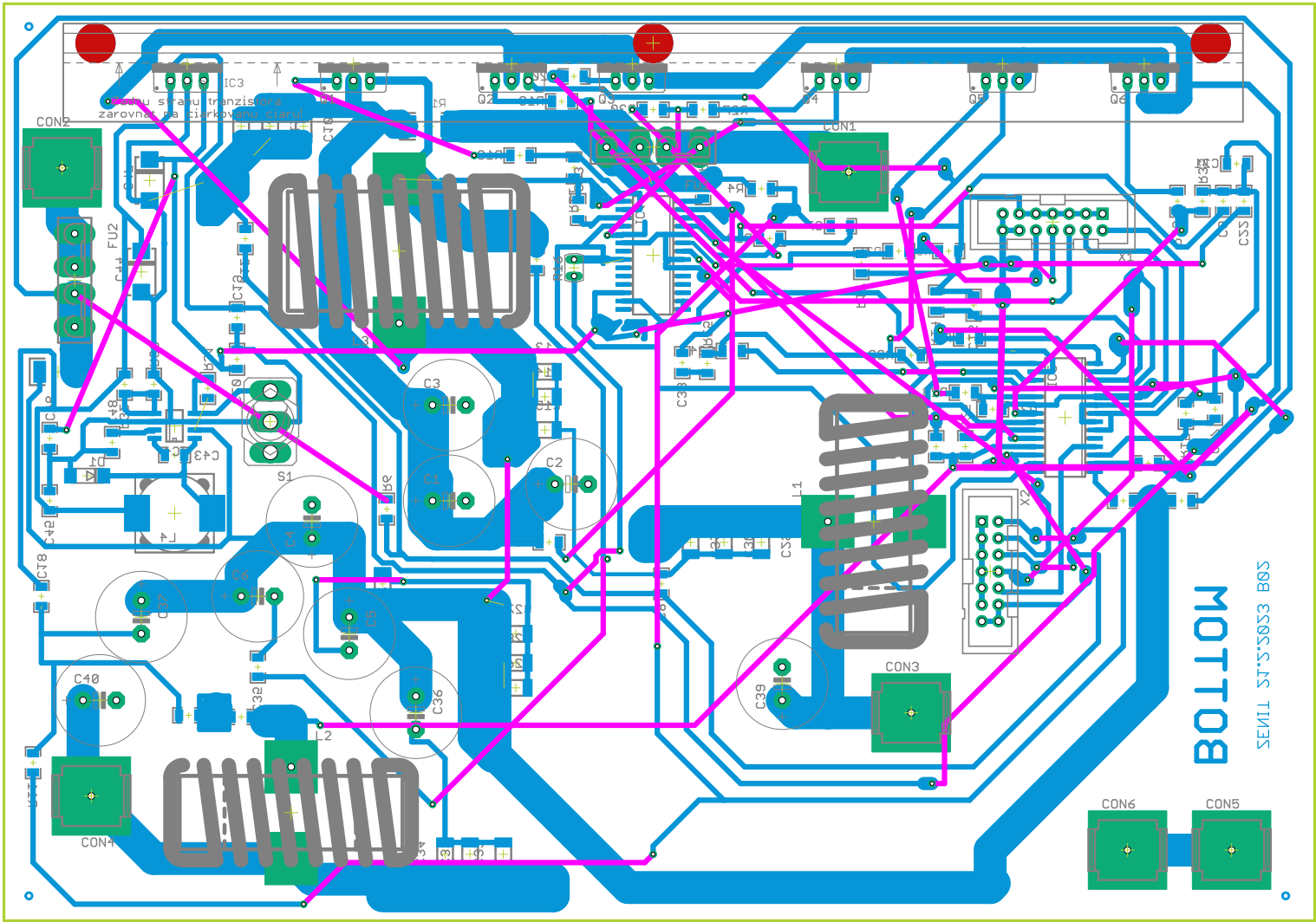


A12 BOTTOM

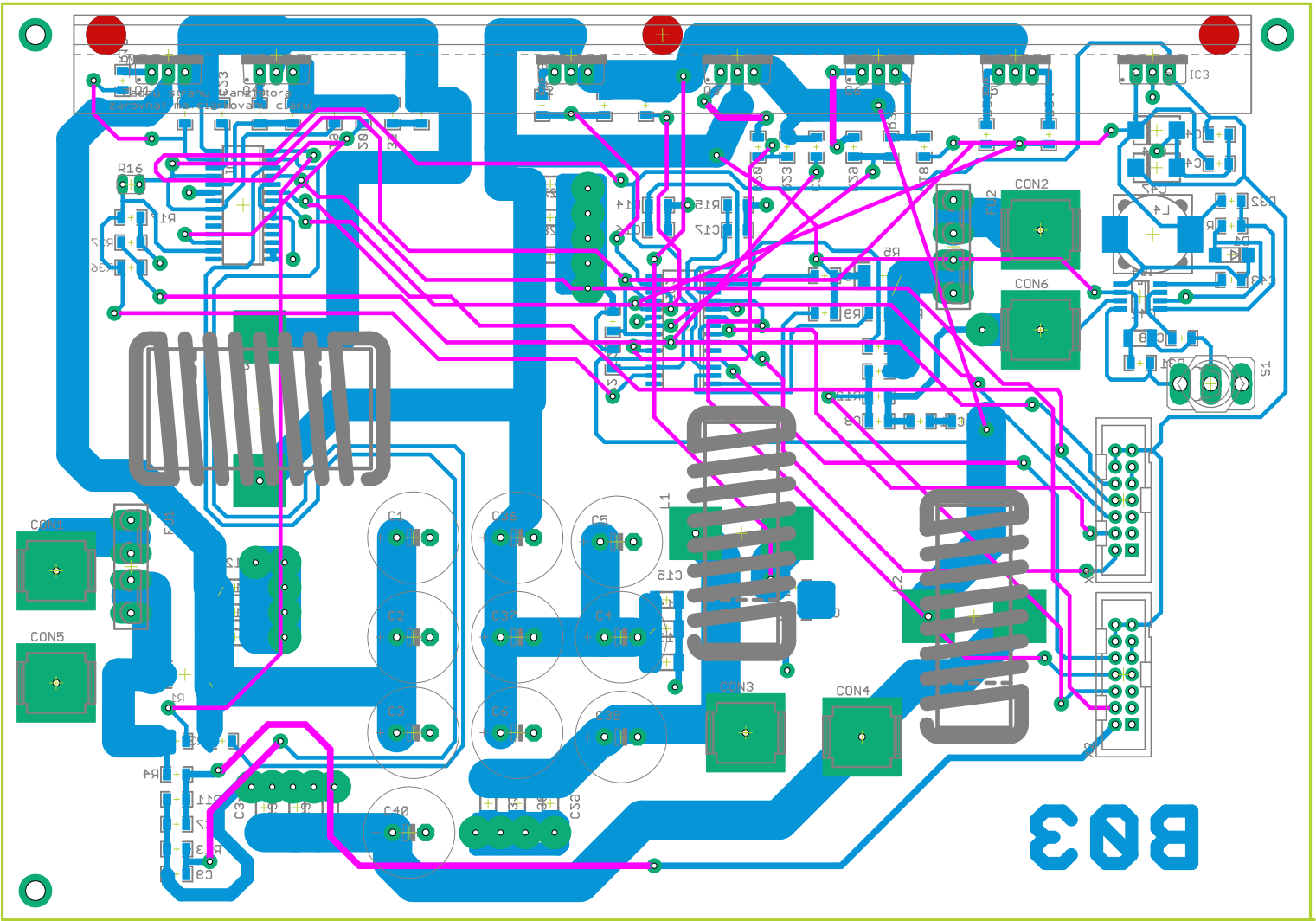




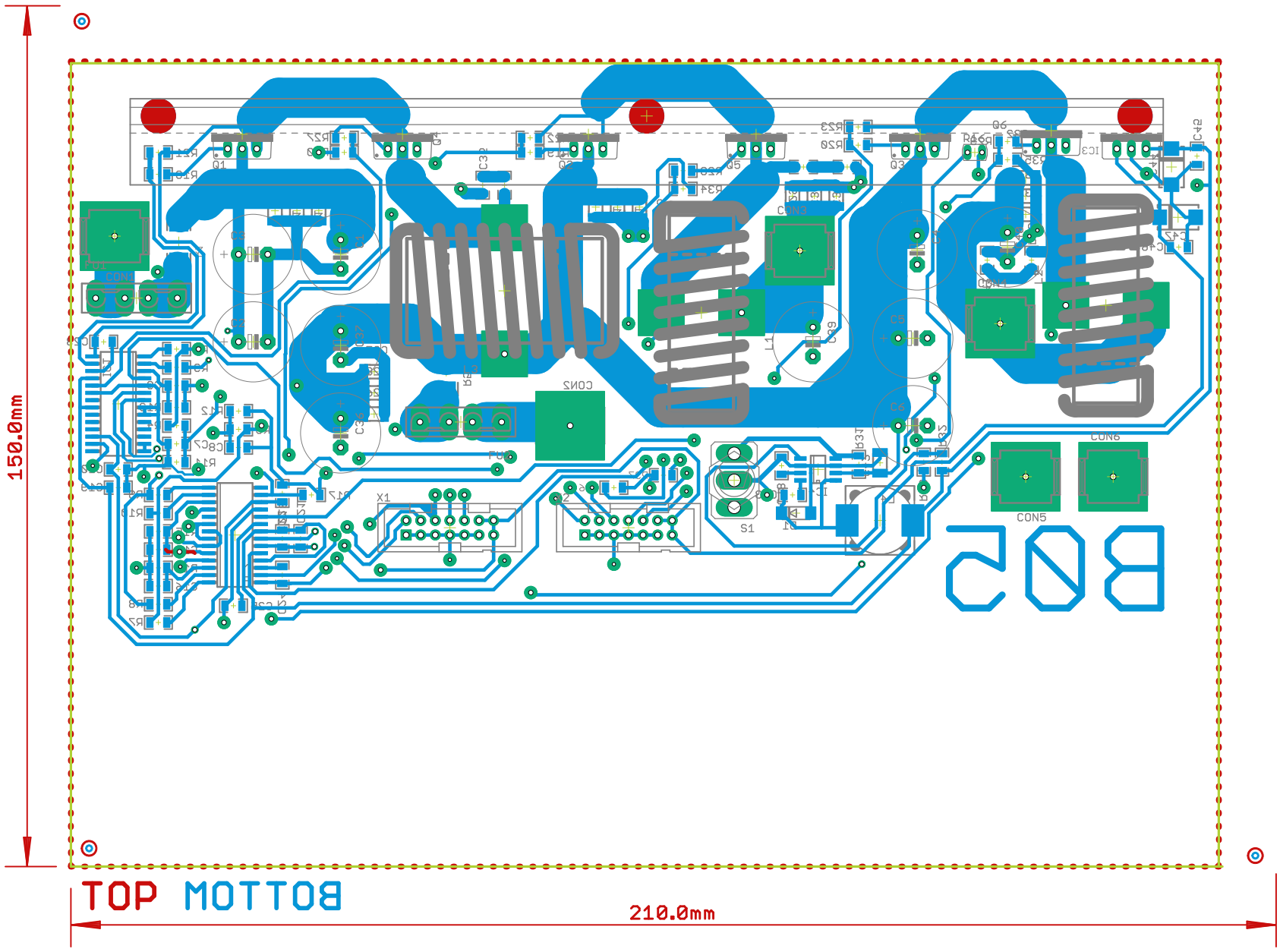
BOTTOM

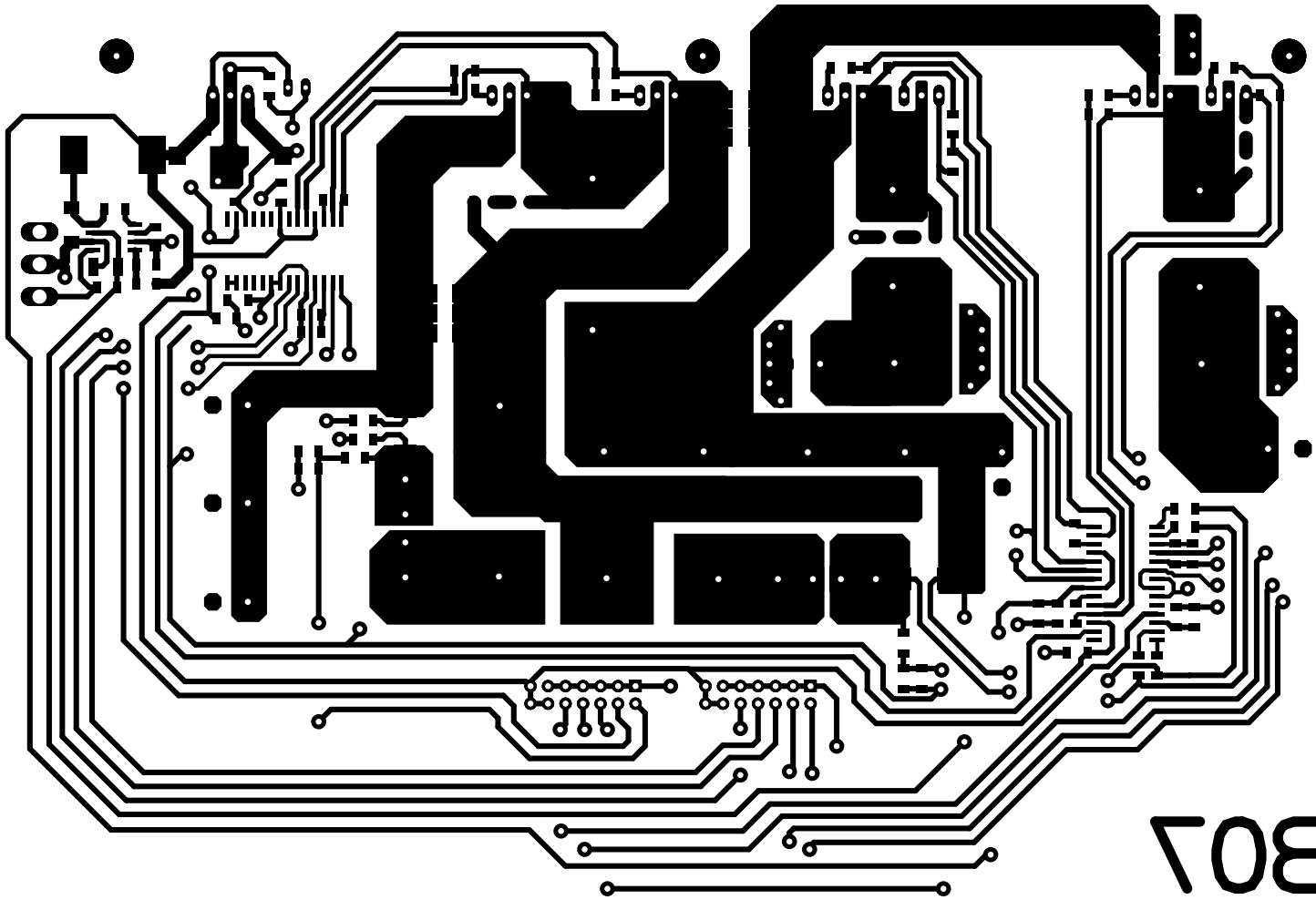


Prilohu stravu tranzistoru
zarovnat na liirkovnych tabulach



BOTTOM

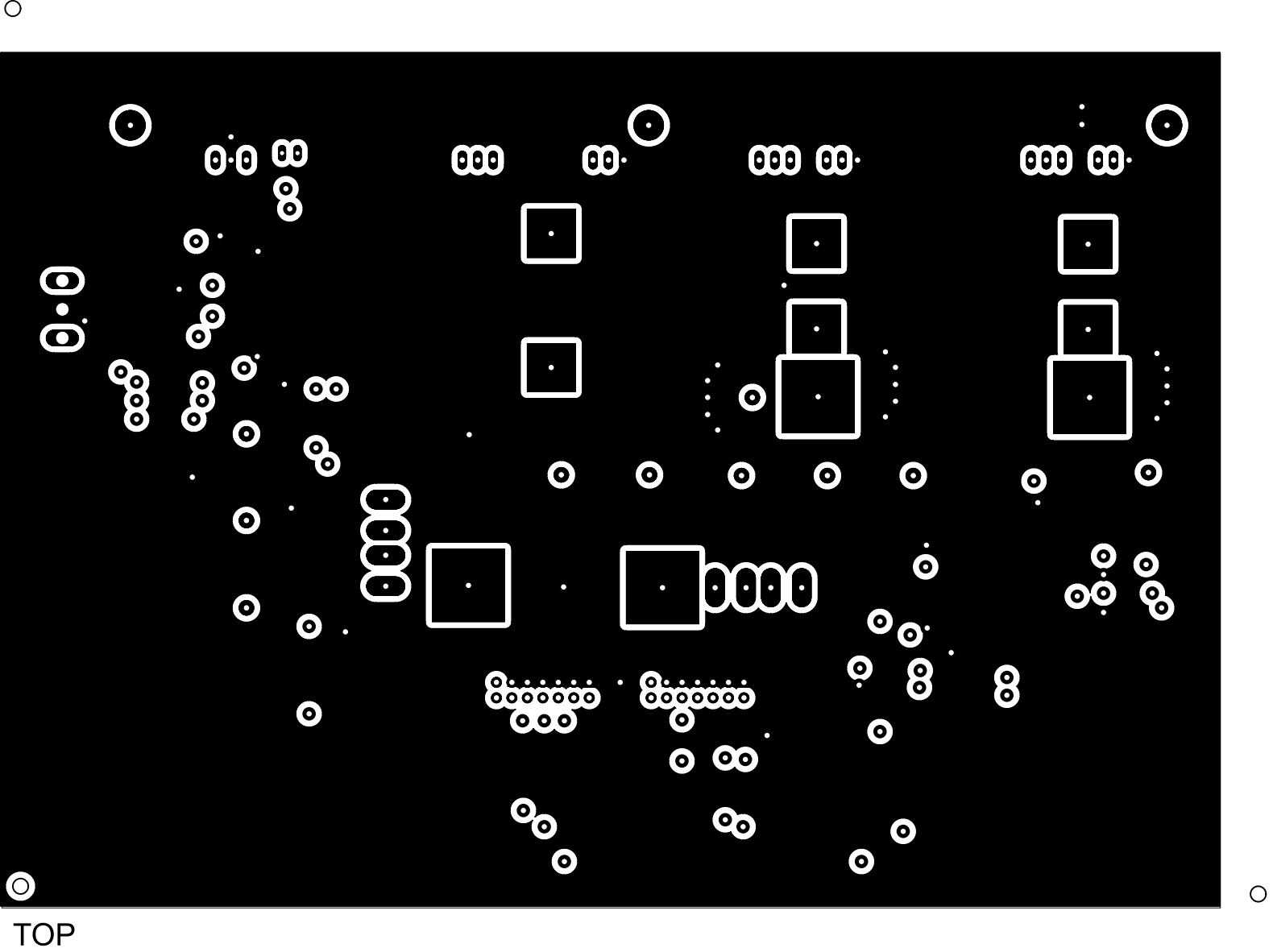


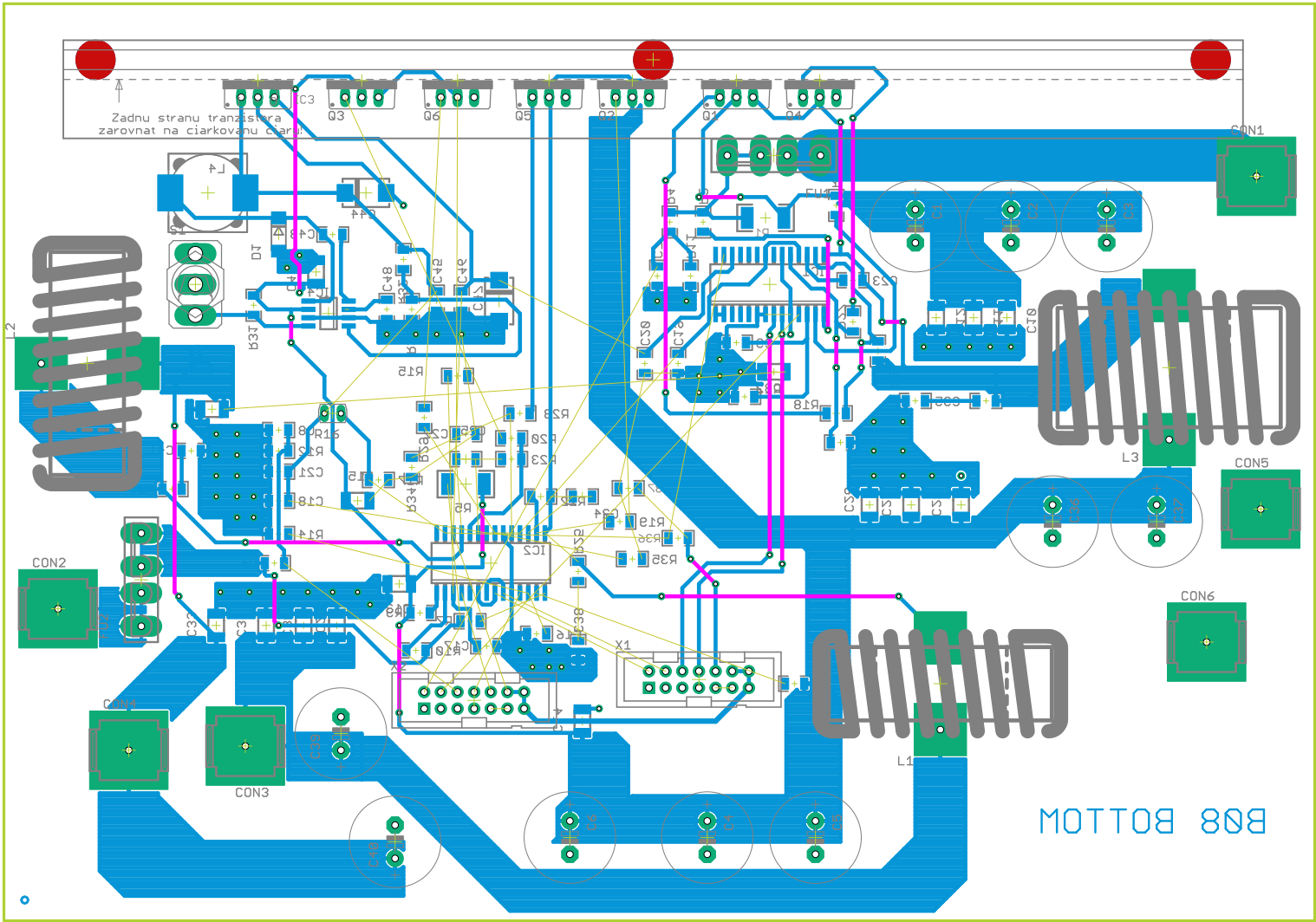


500 x 140

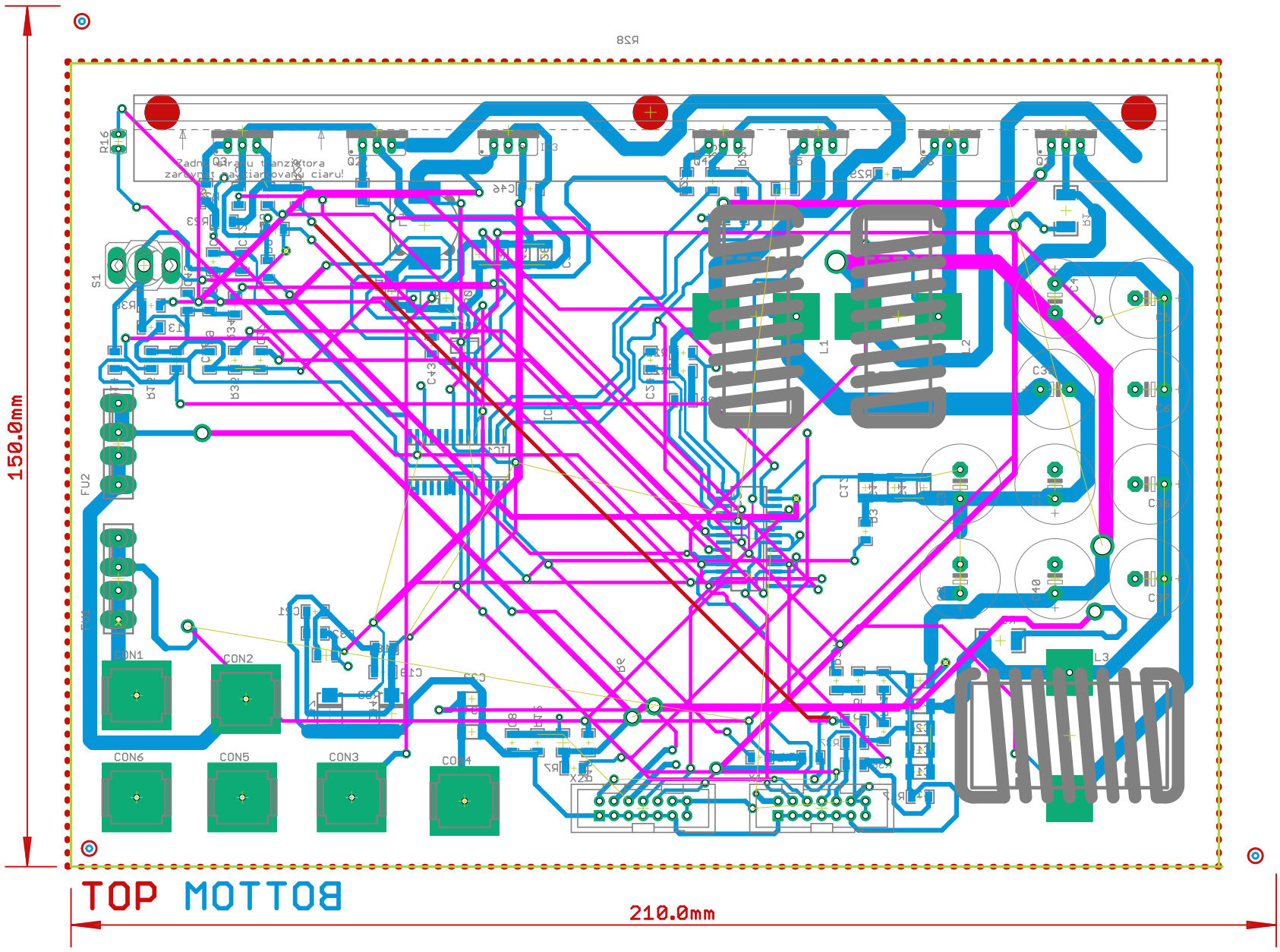
B07

BOTTOM





MOTTOM



150.0mm

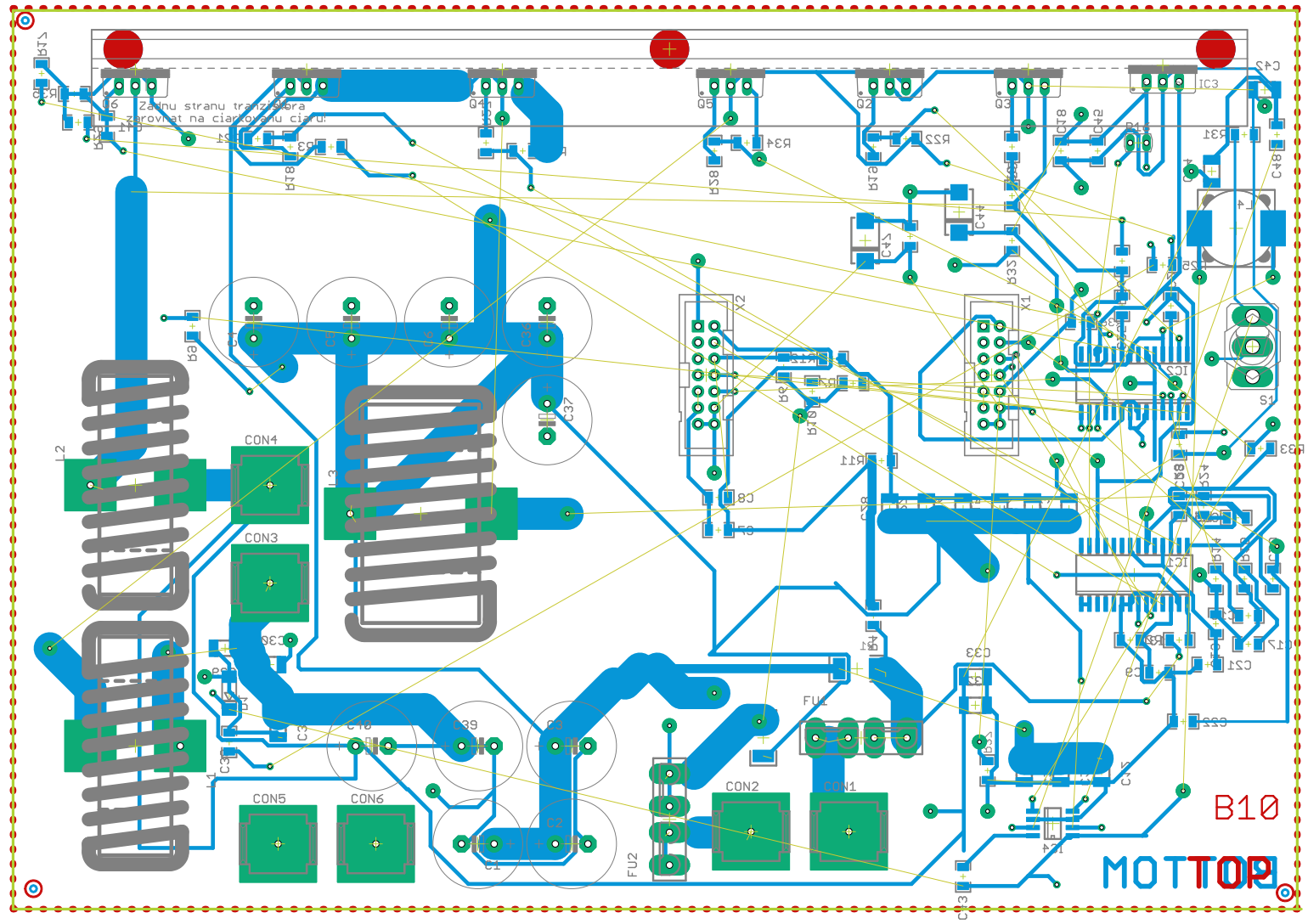
TOP BOTTOM

210.0mm

RSR

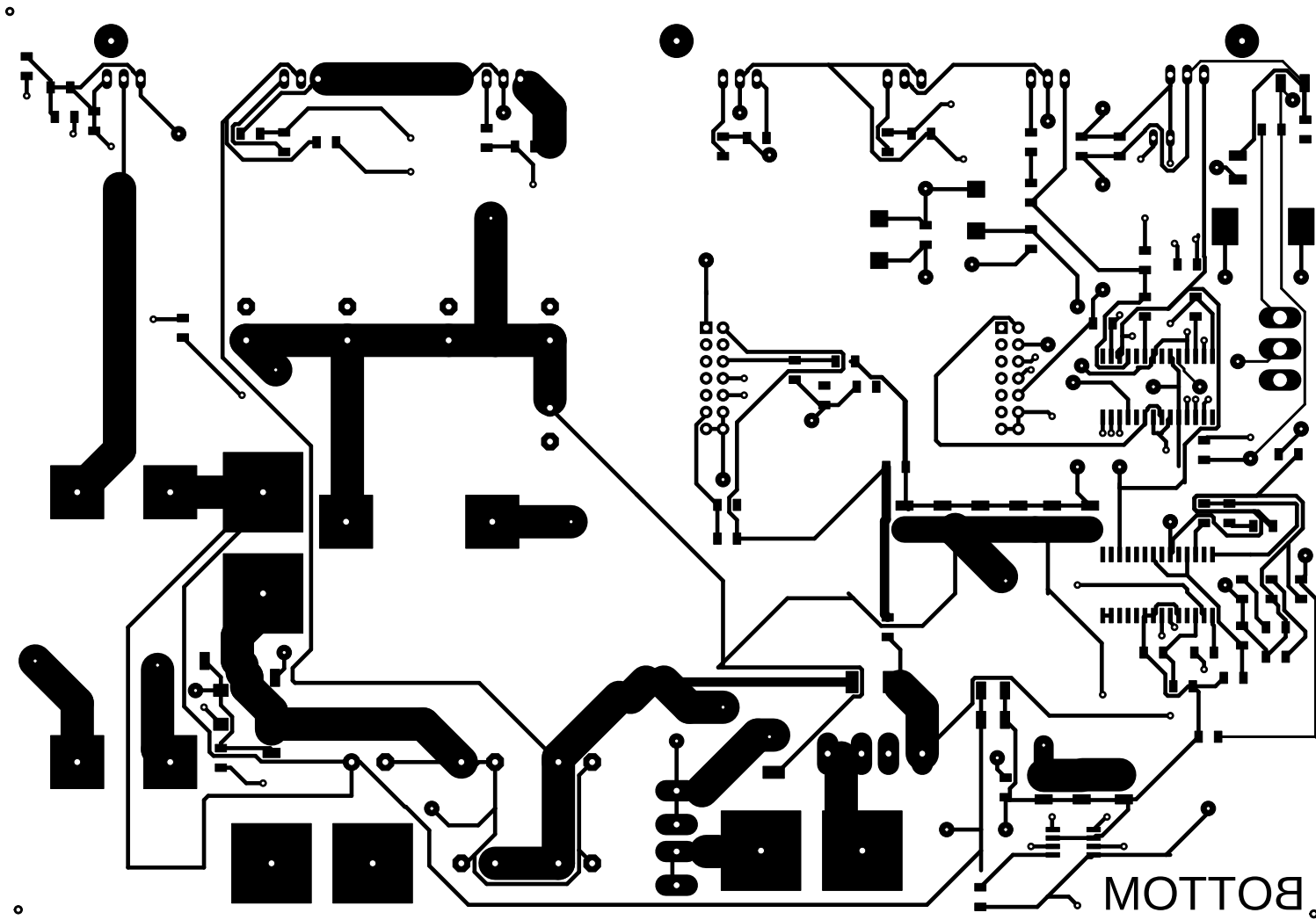
Zadn. strana tranzistora zarezyvat' bez zaradky! ciaru!

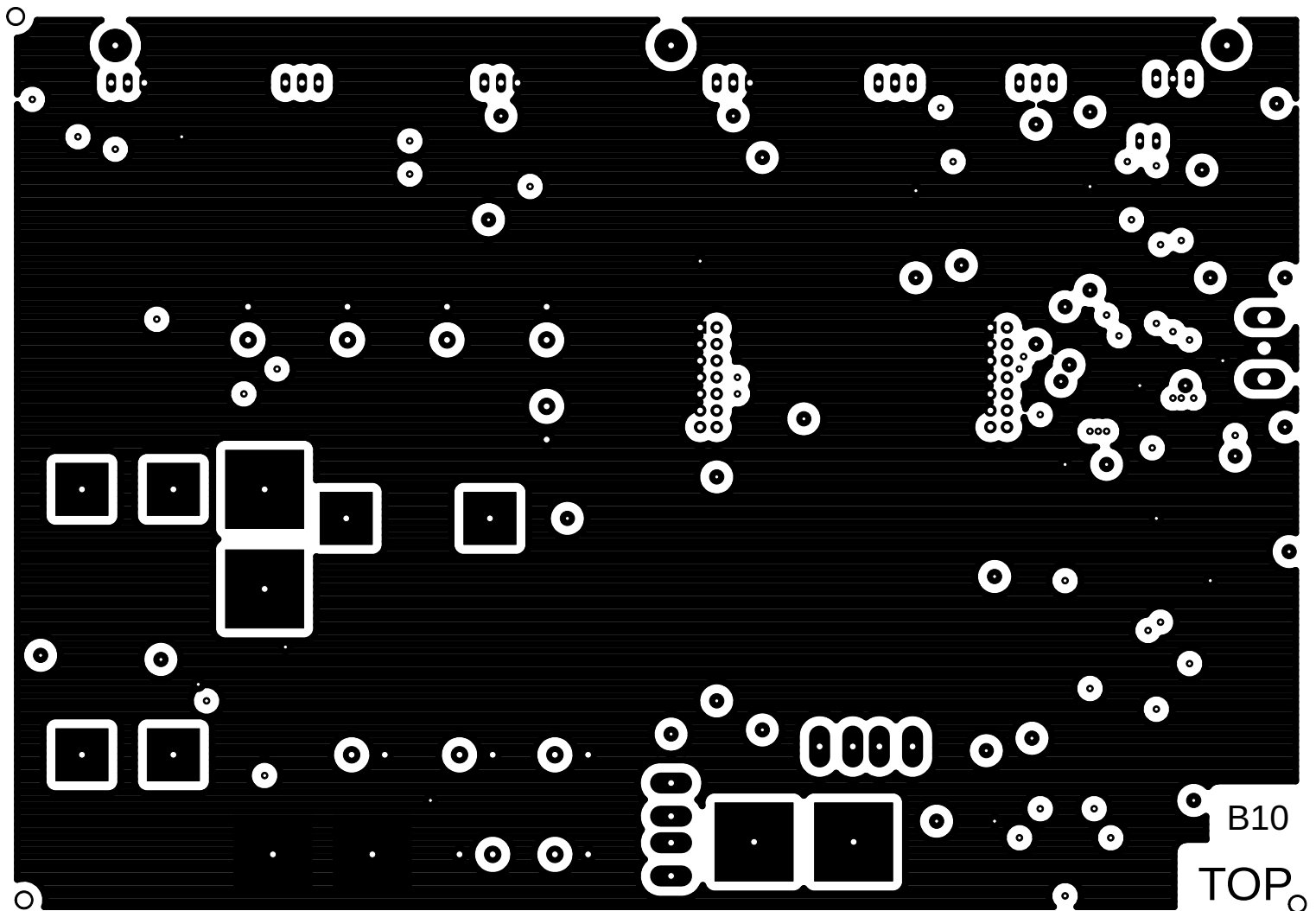
150.0mm



210.0mm

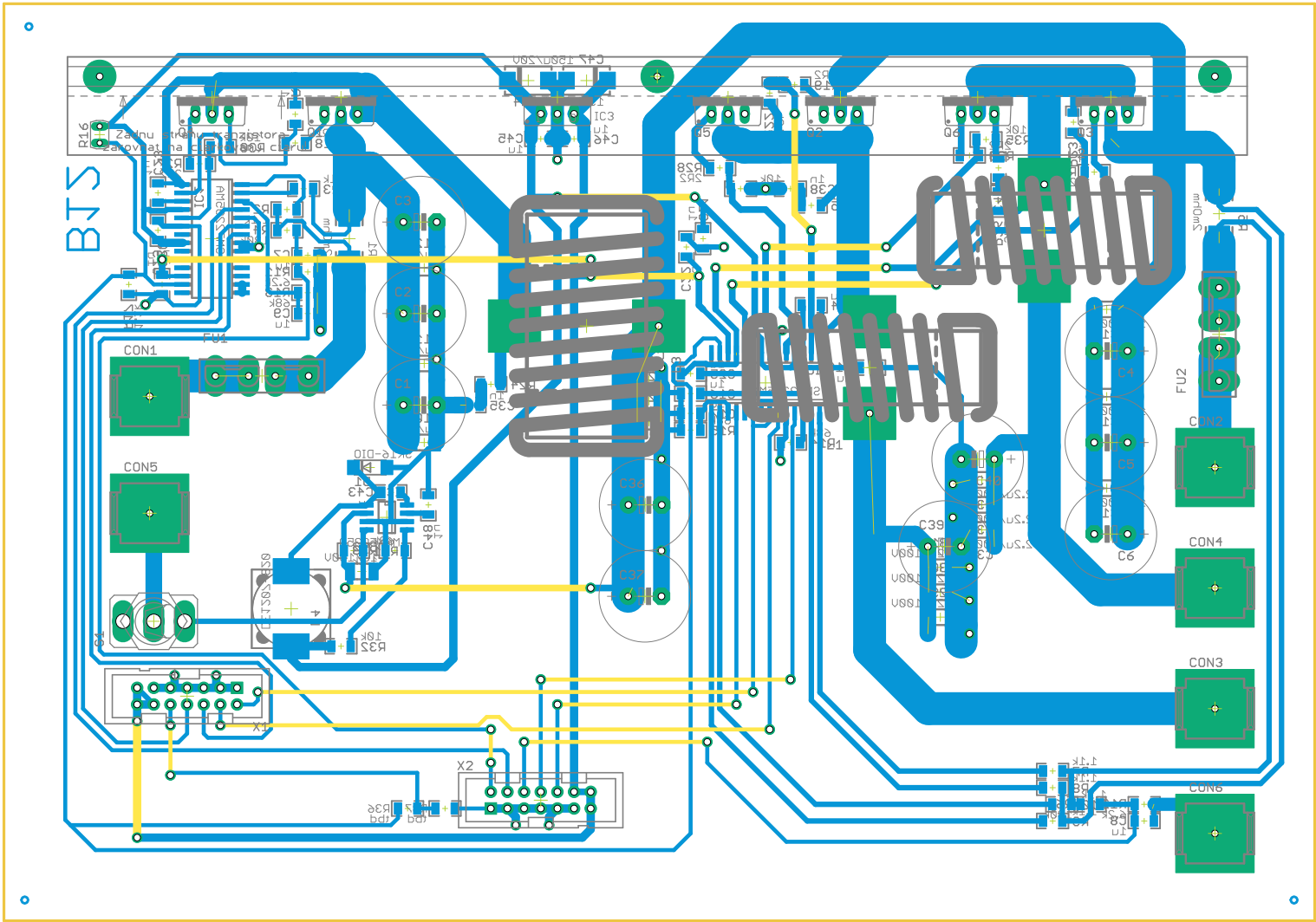
B10
MOTOR





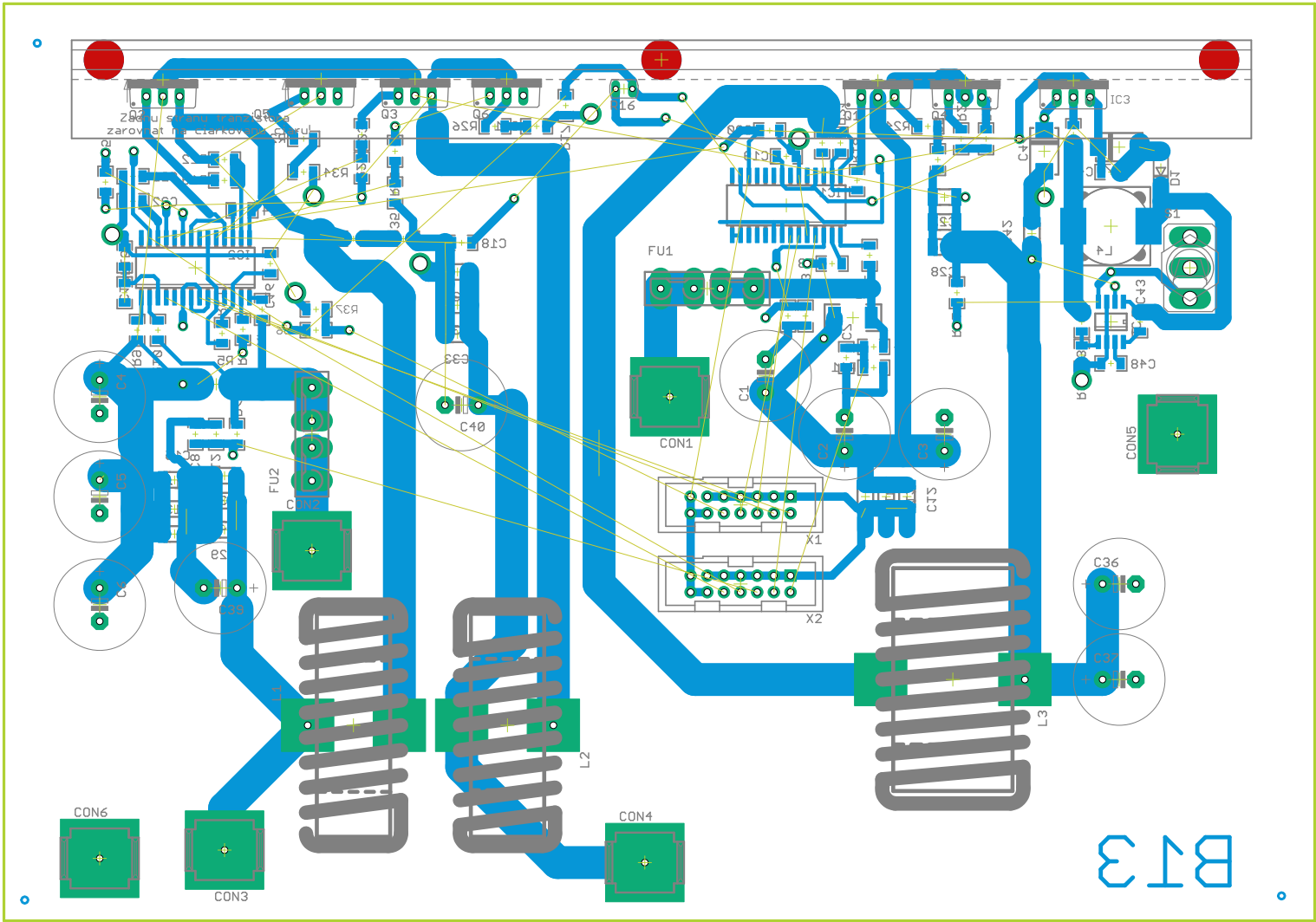
B10

TOP



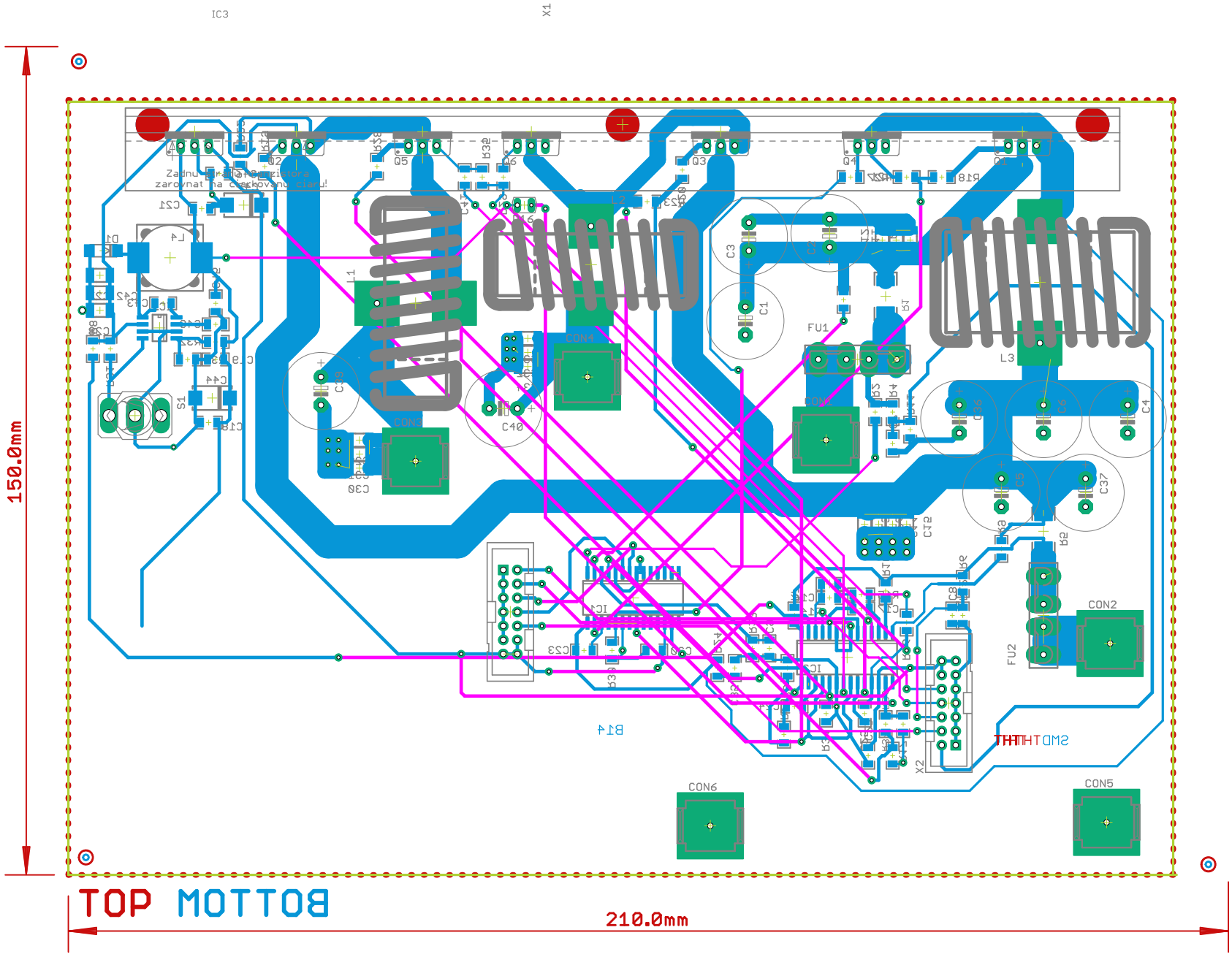
BTS

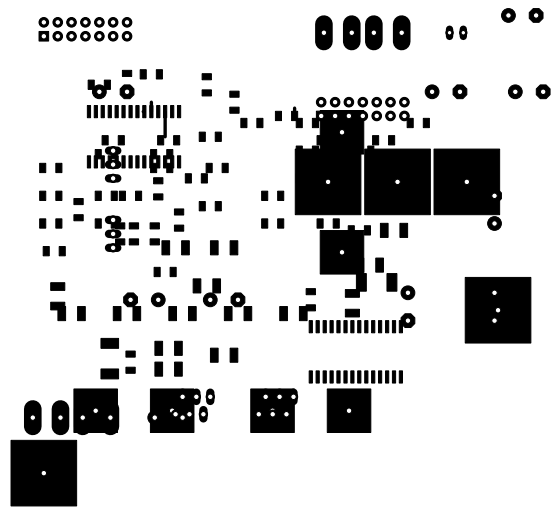
BOTTOM



BOTTOM

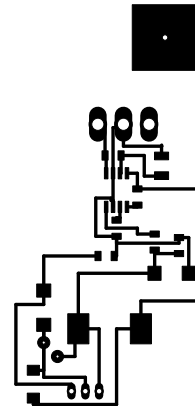
B13





.

MOTTO



.



.

