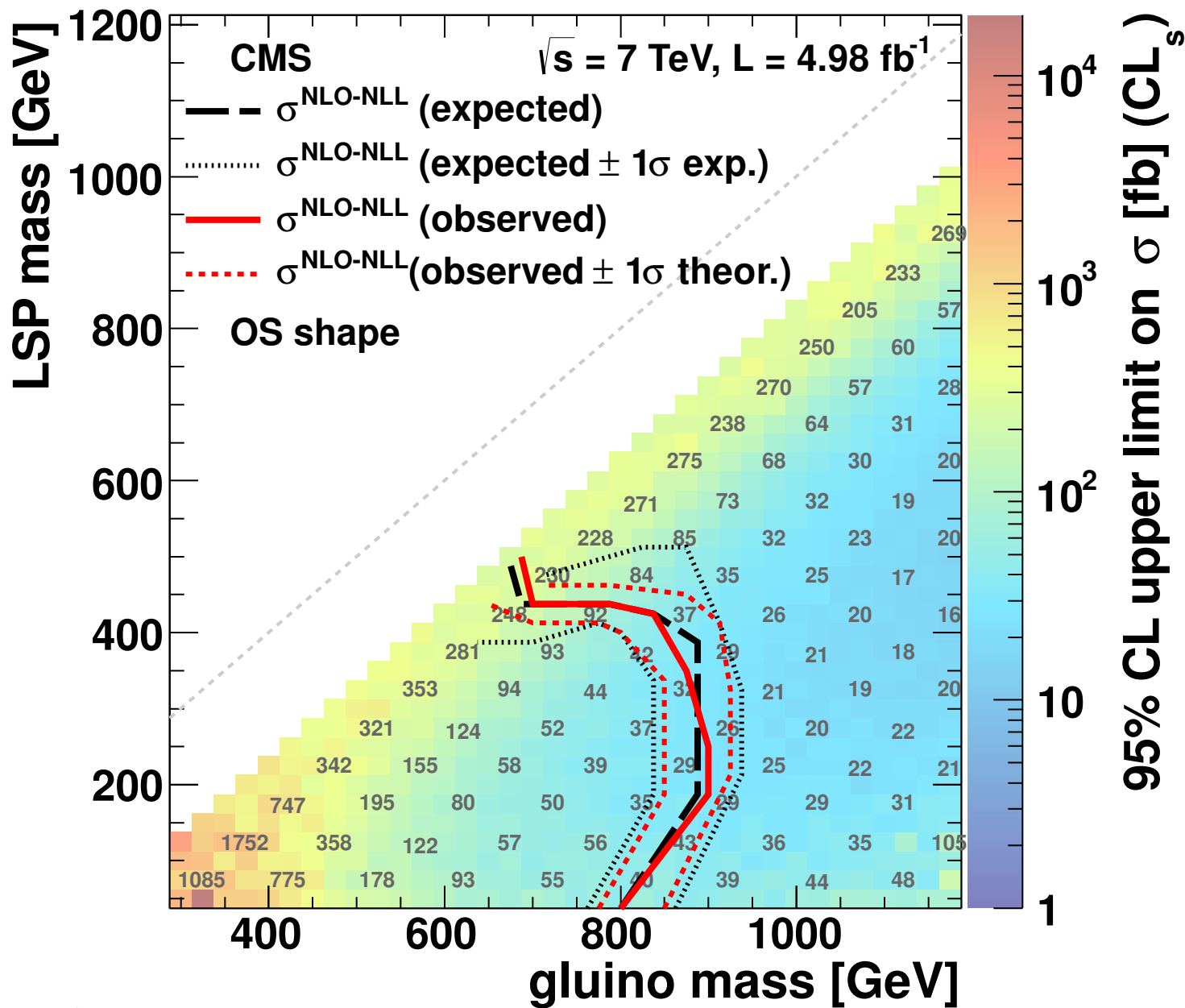


$pp \rightarrow \tilde{g} \tilde{g} \rightarrow q\bar{q} (\tilde{\chi}_2^0 \rightarrow l^+ l^- \tilde{\chi}_{\text{LSP}}); m(\tilde{q}) \gg m(\tilde{g})$



$$m(\tilde{\chi}_2^0) = 0.5 m(\tilde{\chi}_{\text{LSP}}) + 0.5 m(\tilde{g})$$